

DELIKAN



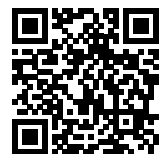
FOOD FOR DOGS AND CATS

MANUFACTURER OF PET FOOD

SINCE 1993



ONLINE CZ



ONLINE GB



ONLINE SK



ONLINE PL



ONLINE HU

DELIKAN



B2B SERVICE



E-mail: prodejna@delikan.cz
Phone: +420 581 773 736

www.b2b.delikanpetfood.com

INDEX / CONTENTS

SUPRA SUPER PREMIUM LINE:

- 005 SUPRA PUPPY SMALL
- 006 SUPRA JUNIOR LARGE
- 007 SUPRA ADULT SMALL
- 008 SUPRA ADULT ACTIVE
- 009 SUPRA ADULT BEEF
- 010 SUPRA ADULT LAMB
- 011 SUPRA ADULT FISH
- 012 SUPRA SENIOR
- 013 SUPRA ADULT INSECT
- 014 SUPRA CURATIVE

CD SUPER PREMIUM LINE:

- 016 CD PUPPY MINI
- 017 CD PUPPY MAXI
- 018 CD ADULT MINI
- 019 CD ADULT MAXI
- 020 CD LAMB & RICE SMALL & MEDIUM
- 021 CD LAMB & RICE
- 022 CD BEEF & RICE
- 023 CD SALMON & POTATO
- 024 CD NORMAL
- 025 CD LIGHT

CD ULTRA PREMIUM LINE:

- 027 CD EXCELLENT CHICKEN
- 028 CD EXCELLENT BEEF
- 029 CD EXCELLENT RABBIT

DELIKAN ORIGINAL:

- 032 ORIGINAL JUNIOR
- 033 ORIGINAL ADULT
- 034 ORIGINAL BALANCE
- 035 ORIGINAL CONDITION BEEF

PREMIUM LINE:

- 036 MAXIMO PUPPY
- 037 MAXIMO ADULT
- 038 MAXIMO LAMB
- 039 MAXIMO MAINTENANCE
- 040 PREMIUM MIX

ECONOMY LINE:

- 041 DELIKAN FIT
- 042 OPTIMAL CHICKEN
- 043 OPTIMAL BEEF
- 044 CD ECONOMY
- 045 DELIKAN CLASSIC

PASTA:

- 046 PASTA NATURAL
- 047 PASTA WITH CARROT
- 048 PASTA WITH SEAWEED
- 049 PASTA WITH EGGS

SUPRA CAT:

- 050 SUPRA CAT KITTEN
- 051 SUPRA CAT CASTRATE
- 052 SUPRA CAT ADULT
- 053 SUPRA CAT TUNA

EXCLUSIVE CAT:

- 054 EXCLUSIVE CAT COCKTAIL
- 055 EXCLUSIVE CAT FISH
- 056 EXCLUSIVE CAT WITH CHEESE
- 057 EXCLUSIVE CAT CHICKEN

CANS FOR DOGS:

- 059 BEEF CHUNKS
- 060 DELIKAN SUPRA BEEF
- 061 DELIKAN SUPRA CHICKEN
- 062 CD BEEF
- 063 CD CHICKEN

CANS FOR CATS:

- 064 SALMON & BEEF
- 065 CHICKEN CHUNKS

FEED FOR RODENTS:

- 066 FOR RATS
- 067 FOR GUINEA PIGS
- 068 FOR HAMSTERS
- 069 FOR RABBITS

DELIKAN SUPRA

WITH FRESH MEAT

PUPPY SMALL
FOR A SMALL AND MEDIUM BREEDS
30 | 18



For better taste, the feed contains:



MINT



SAGE



BASIL



MILK THISTLE



PARSLEY



YARROW



Complete super premium food for puppies. A recipe with a high content of fresh meat, which is designed to support the proper growth and progress of your puppy.

RECOMMENDED DOSAGE				GUARANTEED ANALYSIS		NUTRITIONAL COMPOSITION		
MONTHS	WEIGHT OF DOG - DAILY DOSE			Crude protein	30%	A	Vitamin A (3a672a)	20.000 IU/kg
	DWARF	SMALL	MEDIUM					
	g	g	g					
2	25 - 65	85 - 110	130 - 210	Crude fat	18%	D3	Vitamin D3 (3a671)	2.000 IU/kg
4	35 - 80	125 - 150	210 - 280					
6	40 - 90	130 - 160	230 - 310	Inorganic substances (crude ash)	6.9%	E	Vitamin E (3a700)	147 mg/kg
12	80 - 120	150 - 200	280 - 360					
The recommended dosage is only approximate.				Crude fibre	2.6%	Fe	(Ferrous sulphate monohydrate)	183 mg/kg
				Calcium	1.5%	I	(Potassium iodide)	0.85 mg/kg
				Phosphorus	1.0%	Cu	(Copper sulphate pentahydrate)	24.7 mg/kg
				Se		Mn	(Manganese oxide)	55.98 mg/kg
						Zn	(Zinc oxide)	141,2 mg/kg
							(Sodium selenite)	0.26 mg/kg

LOGISTIC DATA			
PACKAGING	ORDER CODE	EAN CODE	PER PALLET
3 kg	461	8595045404248	135 pcs
12 kg	467	8595045404187	45 pcs



Ingredients: dehydrated turkey meat 21%, fresh meat (poultry, pork, beef) 18%, white rice, brown rice, corn protein, poultry fat, corn grits, beet pulp, dried sea fish, salmon extract, a mixture of dried fruits, poultry liver extract, milk thistle, Yucca Shidigera, seaweed, chondroprotectives, probiotic components, minerals and vitamins.



CoatCare It contains unsaturated fatty acids Omega-6 and Omega-3 which improve the quality of healthy skin and the lustre of the coat. **DentalCare** The shape and the hardness of the food support the growth of healthy teeth and decrease the chance of the development of plaque. **DigestiCare** It affects positively the functioning of the digestive system. **FlexMobility** It supports the correct functioning of the body's motion system. **ImmunoHealth** It supports the animal's immune system and regenerates the cells in the whole organism in a natural way.

JUNIOR LARGE

FOR A PUPPY LARGE BREEDS

28 | 16



Complete super premium food for puppies of larger breeds. A recipe with a high content of fresh meat, which is designed to support the proper growth and development of your dog.

RECOMMENDED DOSAGE			
WEIGHT OF DOG - DAILY DOSE			
MONTHS	BIG		GIANT
	g	g	
2	250 – 320	340 – 385	
4	310 – 430	480 – 570	
6	360 – 470	500 – 600	
12	450 – 570	620 – 720	

The recommended dosage is only approximate.

GUARANTEED ANALYSIS	
Crude protein	28%
Crude fat	16%
Inorganic substances (crude ash)	7.5%
Crude fibre	2.8%
Calcium	1.4%
Phosphorus	0.99%

NUTRITIONAL COMPOSITION		
A	Vitamin A (3a672a)	20.000 IU/kg
D3	Vitamin D3 (3a671)	2.000 IU/kg
E	Vitamin E (3a700)	146 mg/kg
Fe	(Ferrous sulphate monohydrate)	224 mg/kg
I	(Potassium iodide)	0.85 mg/kg
Cu	(Copper sulphate pentahydrate)	23.96mg/kg
Mn	(Manganese oxide)	56.1 mg/kg
Zn	(Zinc oxide)	138.3 mg/kg
Se	(Sodium selenite)	0.21 mg/kg

Ingredients: dehydrated lamb meat 19%, fresh meat (poultry, pork, beef) 18%, pressed greaves, white rice, brown rice, corn grits, poultry fat, beet pulp, salmon extract, corn protein, a mixture of dried fruits, poultry liver extract, milk thistle, Yucca Shidigera, seaweed, chondroprotectives, probiotic components, minerals and vitamins.



LOGISTIC DATA			
PACKAGING	ORDER CODE	EAN CODE	PER PALLET
3 kg	470	8595045404255	135 pcs
12 kg	473	8595045404170	45 pcs

ADULT SMALL

FOR A SMALL BREEDS

27 | 16



Complete super premium food for adult dogs. The recipe with a high content of fresh meat, enriched with fruits, vegetables, herbs and together with rice forms a unique combination for a great digestion of your dog.

RECOMMENDED DOSAGE		
WEIGHT OF DOG		
kg	DAILY DOSE	
	g	
1 – 3	40 – 75	
3 – 5	75 – 105	
5 – 7	105 – 145	
7 – 10	145 – 210	

The recommended dosage is only approximate.

GUARANTEED ANALYSIS	
Crude protein	27%
Crude fat	16%
Inorganic substances (crude ash)	6.8%
Crude fibre	2.5%
Calcium	1.5%
Phosphorus	1.1%

NUTRITIONAL COMPOSITION		
A	Vitamin A (3a672a)	19.000 IU/kg
D3	Vitamin D3 (3a671)	1.900 IU/kg
E	Vitamin E (3a700)	136 mg/kg
Fe	(Ferrous sulphate monohydrate)	188.6 mg/kg
I	(Potassium iodide)	0.82 mg/kg
Cu	(Copper sulphate pentahydrate)	24.1 mg/kg
Mn	(Manganese oxide)	56.4 mg/kg
Zn	(Zinc oxide)	140.6 mg/kg
Se	(Sodium selenite)	0.26 mg/kg

Ingredients: dehydrated turkey meat 20%, fresh meat (poultry, pork, beef) 18%, white rice, brown rice, corn protein, corn grits, poultry fat, beet pulp, salmon extract, dried sea fish, a mixture of dried fruits, poultry liver extract, milk thistle, Yucca Shidigera, seaweed, chondroprotectives, probiotic components, minerals and vitamins.



LOGISTIC DATA			
PACKAGING	ORDER CODE	EAN CODE	PER PALLET
3 kg	476	8595045404262	135 pcs
12 kg	479	8595045404149	45 pcs

ADULT ACTIVE FOR A LARGE BREEDS 33 | 20



Complete super premium food for adult dogs. A recipe with a high content of fresh meat, which has been specially designed to cover the needs of active dogs and dogs under load.

RECOMMENDED DOSAGE	
WEIGHT OF DOG	DAILY DOSE
kg	g
1 – 10	50 – 130
10 – 20	130 – 250
20 – 30	250 – 360
30 – 40	360 – 450
40 – 50	450 – 540

The recommended dosage is only approximate.

GUARANTEED ANALYSIS	
Crude protein	33%
Crude fat	20%
Inorganic substances (crude ash)	5.1%
Crude fibre	2.7%
Calcium	1.3%
Phosphorus	0.93%

NUTRITIONAL COMPOSITION		
A	Vitamin A (3a672a)	20.000 IU/kg
D3	Vitamin D3 (3a671)	2.000 IU/kg
E	Vitamin E (3a700)	147 mg/kg
Fe	(Ferrous sulphate monohydrate)	177 mg/kg
I	(Potassium iodide)	0.81 mg/kg
Cu	(Copper sulphate pentahydrate)	22.72 mg/kg
Mn	(Manganese oxide)	55.17 mg/kg
Zn	(Zinc oxide)	138.4 mg/kg
Se	(Sodium selenite)	0.23 mg/kg

Ingredients: dehydrated poultry meat 26%, fresh meat (poultry, pork, beef) 18%, white rice, brown rice, poultry fat, corn grits, corn protein, beet pulp, salmon extract, dried sea fish, a mixture of dried fruits, poultry liver extract, milk thistle, Yucca Shidigera, seaweed, chondroprotectives, probiotic components, minerals and vitamins.



LOGISTIC DATA			
PACKAGING	ORDER CODE	EAN CODE	PER PALLET
3 kg	491	8595045404286	135 pcs
12 kg	494	8595045404132	45 pcs

ADULT BEEF FOR A MEDIUM BREEDS 32 | 18



Complete super premium food for adult dogs. A recipe with a high content of fresh meat, which was specially designed to cover the needs of active dogs and dogs under load, all in with addition of beef.

RECOMMENDED DOSAGE	
WEIGHT OF DOG	DAILY DOSE
kg	g
1 – 10	50 – 130
10 – 20	130 – 250
20 – 30	250 – 360
30 – 40	360 – 450
40 – 50	450 – 540

The recommended dosage is only approximate.

GUARANTEED ANALYSIS	
Crude protein	32%
Crude fat	18%
Inorganic substances (crude ash)	4.5%
Crude fibre	2.5%
Calcium	1.7%
Phosphorus	1.2%

NUTRITIONAL COMPOSITION		
A	Vitamin A (3a672a)	20.000 IU/kg
D3	Vitamin D3 (3a671)	2.000 IU/kg
E	Vitamin E (3a700)	148 mg/kg
Fe	(Ferrous sulphate monohydrate)	236 mg/kg
I	(Potassium iodide)	0.83 mg/kg
Cu	(Copper sulphate pentahydrate)	23.55 mg/kg
Mn	(Manganese oxide)	55.37 mg/kg
Zn	(Zinc oxide)	139.4 mg/kg
Se	(Sodium selenite)	0.24 mg/kg

Ingredients: dehydrated beef meat 20%, fresh meat (poultry, pork, beef) 18%, white rice, brown rice, beef fat, corn grits, corn protein, pressed greaves, salmon extract, beet pulp, dried sea fish, a mixture of dried fruits, poultry liver extract, milk thistle, Yucca Shidigera, seaweed, chondroprotectives, probiotic components, minerals and vitamins.



LOGISTIC DATA			
PACKAGING	ORDER CODE	EAN CODE	PER PALLET
3 kg	482	8595045404279	135 pcs
12 kg	485	8595045404163	45 pcs

ADULT LAMB

HYPOALLERGENIC

27 | 15



CERTIFIED
ISO
COMPANY



Complete super premium food for adult dogs. Hypoallergenic recipe with a high content of dried lamb, which is especially suitable for dogs with sensitive digestion.

RECOMMENDED DOSAGE	
WEIGHT OF DOG	DAILY DOSE
kg	g
1 – 10	50 – 130
10 – 20	130 – 250
20 – 30	250 – 360
30 – 40	360 – 450
40 – 50	450 – 540

The recommended dosage is only approximate.

GUARANTEED ANALYSIS	
Crude protein	27%
Crude fat	15%
Inorganic substances (crude ash)	7.2%
Crude fibre	2.9%
Calcium	1.39%
Phosphorus	0.98%

NUTRITIONAL COMPOSITION		
A	Vitamin A (3a672a)	20.000 IU/kg
D3	Vitamin D3 (3a671)	2.000 IU/kg
E	Vitamin E (3a700)	146 mg/kg
Fe	(Ferrous sulphate monohydrate)	220 mg/kg
I	(Potassium iodide)	0.85 mg/kg
Cu	(Copper sulphate pentahydrate)	23.80 mg/kg
Mn	(Manganese oxide)	56.1 mg/kg
Zn	(Zinc oxide)	138.1 mg/kg
Se	(Sodium selenite)	0.22 mg/kg

Ingredients: dehydrated lamb meat from New Zealand 20%, pressed greaves, white rice, brown rice, corn grits, beet pulp, beef fat, poultry fat, salmon extract, corn protein, a mixture of dried fruits, poultry liver extract, milk thistle, Yucca Shidigera, Seaweed, chondroprotectives, probiotic components, minerals and vitamins.



LOGISTIC DATA			
PACKAGING	ORDER CODE	EAN CODE	PER PALLET
3 kg	497	8595045404293	135 pcs
12 kg	500	8595045404156	45 pcs

ADULT FISH

FOR A MEDIUM BREEDS WITH VEGETABLES

25 | 12



CERTIFIED
ISO
COMPANY



Complete super premium food for adult dogs. A recipe with a high content of fresh meat, which with its lighter composition will provide proper nutrition even to less active dogs.

RECOMMENDED DOSAGE	
WEIGHT OF DOG	DAILY DOSE
kg	g
1 – 10	50 – 130
10 – 20	130 – 250
20 – 30	250 – 360
30 – 40	360 – 450
40 – 50	450 – 540

The recommended dosage is only approximate.

GUARANTEED ANALYSIS	
Crude protein	25%
Crude fat	12%
Inorganic substances (crude ash)	5.9%
Crude fibre	2.7%
Calcium	1.28%
Phosphorus	0.91%

NUTRITIONAL COMPOSITION		
A	Vitamin A (3a672a)	20.000 IU/kg
D3	Vitamin D3 (3a671)	2.000 IU/kg
E	Vitamin E (3a700)	146 mg/kg
Fe	(Ferrous sulphate monohydrate)	209 mg/kg
I	(Potassium iodide)	0.85 mg/kg
Cu	(Copper sulphate pentahydrate)	23.39 mg/kg
Mn	(Manganese oxide)	57.15 mg/kg
Zn	(Zinc oxide)	137.6 mg/kg
Se	(Sodium selenite)	0.22 mg/kg

Ingredients: fresh meat (poultry, pork, beef) 18%, dehydrated sea fish 17%, white rice, brown rice, pressed greaves, corn grits, salmon extract, poultry fat, beet pulp, corn protein, a mixture of dried fruits, poultry liver extract, milk thistle, Yucca Shidigera, seaweed, chondroprotectives, probiotic components, minerals and vitamins.



LOGISTIC DATA			
PACKAGING	ORDER CODE	EAN CODE	PER PALLET
3 kg	506	8595045404309	135 pcs
12 kg	512	8595045404194	45 pcs

SENIOR FOR A MEDIUM BREEDS 23 | 10



Complete super premium food for adult dogs. A recipe with a high content of fresh meat, supplemented by a higher content of chondroprotectives for proper nutrition of senior dogs.

RECOMMENDED DOSAGE	
WEIGHT OF DOG	DAILY DOSE
kg	g
1 – 10	30 – 120
10 – 20	120 – 220
20 – 30	220 – 330
30 – 40	330 – 440
40 – 50	440 – 510

The recommended dosage is only approximate.

GUARANTEED ANALYSIS	
Crude protein	23%
Crude fat	10%
Inorganic substances (crude ash)	4.4%
Crude fibre	2.8%
Calcium	1.39%
Phosphorus	0.98%

NUTRITIONAL COMPOSITION		
A	Vitamin A (3a672a)	15.000 IU/kg
D3	Vitamin D3 (3a671)	1.500 IU/kg
E	Vitamin E (3a700)	111 mg/kg
Fe	(Ferrous sulphate monohydrate)	164.5 mg/kg
I	(Potassium iodide)	0.60 mg/kg
Cu	(Copper sulphate pentahydrate)	17.42 mg/kg
Mn	(Manganese oxide)	46.57 mg/kg
Zn	(Zinc oxide)	104.4 mg/kg
Se	(Sodium selenite)	0.16 mg/kg

Ingredients: fresh meat (poultry, pork, beef) 18%, dehydrated poultry meat 15%, rice, corn grits, wheat, pressed greaves, poultry fat, beet pulp, salmon extract, dried sea fish, a mixture of dried fruits, poultry liver extract, milk thistle, Yucca Shidigera, seaweed, chondroprotectives, probiotic components, minerals and vitamins.



LOGISTIC DATA			
PACKAGING	ORDER CODE	EAN CODE	PER PALLET
3 kg	524	8595045404330	135 pcs
12 kg	527	8595045404200	45 pcs

ADULT INSECT HYPOALERGENNIC FOOD FOR ADULT 24 | 14



Complete super premium food for adult dogs. A hypoallergenic recipe with a high content of insect protein, which is especially suitable for dogs with intolerance to the most commonly used animal proteins.

RECOMMENDED DOSAGE	
WEIGHT OF DOG	DAILY DOSE
kg	g
5 – 10	55 – 115
10 – 20	115 – 230
20 – 30	230 – 340
30 – 40	340 – 490

The recommended dosage is only approximate.

GUARANTEED ANALYSIS	
Crude protein	24%
Crude fat	14%
Inorganic substances (crude ash)	7%
Crude fibre	2.2%
Calcium	1.1%
Phosphorus	0.8%

NUTRITIONAL COMPOSITION		
A	Vitamin A (3a672a)	20.000 IU/kg
D3	Vitamin D3 (3a671)	1.900 IU/kg
E	Vitamin E (3a700)	300 mg/kg
Fe	(Ferrous sulphate monohydrate)	169 mg/kg
I	(Potassium iodide)	3.01 mg/kg
Cu	(Copper sulphate pentahydrate)	22.52 mg/kg
Mn	(Manganese oxide)	23.17 mg/kg
Zn	(Zinc oxide)	204.4 mg/kg
Se	(Sodium selenite)	0.34 mg/kg

Ingredients: insect protein 16%, white rice, brown rice, dried peas, poultry fat, fodder yeast, beet pulp, a mixture of dried fruits, poultry liver extract, milk thistle, Yucca Shidigera, seaweed, chondroprotectives, probiotic components, minerals and vitamins.



LOGISTIC DATA			
PACKAGING	ORDER CODE	EAN CODE	PER PALLET
3 kg	518	8595045404217	135 pcs

CURATIVE FOR A MEDIUM BREEDS

24 | 12



Super Premium Line

Complete super premium food for adult dogs. A hypoallergenic recipe with a high content of fresh meat with the addition of biochar, which contributes to the detoxification of the body, reduces flatulence and helps with digestive problems.

RECOMMENDED DOSAGE		GUARANTEED ANALYSIS		NUTRITIONAL COMPOSITION	
WEIGHT OF DOG	DAILY DOSE				
kg	g				
5 – 10	55 – 115	Crude protein	24%	A	Vitamin A (3a672a) 18.000 IU/kg
10 – 20	115 – 230	Crude fat	12%	D3	Vitamin D3 (3a671) 1.800 IU/kg
20 – 30	230 – 340	Inorganic substances (crude ash)	4.8%	E	Vitamin E (3a700) 132 mg/kg
30 – 40	340 – 490	Crude fibre	2.6%	Fe	(Ferrous sulphate monohydrate) 174 mg/kg
		Calcium	1.18%	I	(Potassium iodide) 0.77 mg/kg
		Phosphorus	0.88%	Cu	(Copper sulphate pentahydrate) 21.42 mg/kg
				Mn	(Manganese oxide) 53.17 mg/kg
				Zn	(Zinc oxide) 126.4 mg/kg
				Se	(Sodium selenite) 0.22 mg/kg

The recommended dosage is only approximate.

Ingredients: dehydrated poultry meat 20%, fresh meat (poultry, pork, beef) 18%, white rice, brown rice, poultry fat, corn grits, corn protein, beet pulp, salmon extract, biochar, dried sea fish, a mixture of dried fruits, poultry liver extract, milk thistle, Yucca Shidigera, seaweed, chondroprotectives, probiotic components, minerals and vitamins.



The feeds of the CD series contain unsaturated fatty acids (Omega-3 and 6) are well-balanced. The contents of macro and microelements fully cover the needs of large adult dogs. Vitamins are well-balanced, and the share of vitamin C improving the collagen biosynthesis is higher. This ensures the correct regeneration of bone and gristle tissues. Vitamin C improves stamina and the immunity system together with the share of probiotics which positively influence the enteric microflora.

LOGISTIC DATA			
PACKAGING	ORDER CODE	EAN CODE	PER PALLET
3 kg	521	8595045404224	135 pcs

CD PUPPY MINI

COMPLETE FEED-STUFFS FOR PUPPIES OF SMALL RACES

32 | 19

The unsaturated fatty acids (Omega -3 and 6) are well balanced. The contents of macro and microelements fully cover the needs of growing small puppies.



The specially used ingredients and other complements of this food allow a correct and healthy breeding of puppies of small races. The food fulfills the strictest criteria of nutritive and dietetic values. The size and shape of granules is also specially adjusted to small dogs. The share of proteins is ensured mainly by animal stuff (poultry meat and products). Vitamins fully cover the needs of puppies; besides there is a higher share of vitamin C helping the collagen biosynthesis necessary for an optimum growth and development of bone and gristle tissues.

RECOMMENDED DOSAGE			
WEIGHT OF DOG - DAILY DOSE			
MONTHS	DWARF	SMALL	MEDIUM
	g	g	g
2	25 – 65	85 – 110	130 – 210
4	35 – 80	125 – 150	210 – 280
6	40 – 90	130 – 160	230 – 310
12	80 – 120	150 – 200	280 – 360

The recommended dosage is only approximate.

GUARANTEED ANALYSIS	
Crude protein	32%
Crude fat	19%
Inorganic substances (crude ash)	5.5%
Crude fibre	2.8%
Calcium	1.3%
Phosphorus	1.0%

NUTRITIONAL COMPOSITION		
A	Vitamin A (3a672a)	19.000 IU/kg
D3	Vitamin D3 (3a671)	1.900 IU/kg
E	Vitamin E (3a700)	140 mg/kg
Fe	(Ferrous sulphate monohydrate)	180 mg/kg
I	(Potassium iodide)	0.75 mg/kg
Cu	(Copper sulphate pentahydrate)	24 mg/kg
Mn	(Manganese oxide)	50 mg/kg
Zn	(Zinc oxide)	120 mg/kg
Se	(Sodium selenite)	0.23 mg/kg

Ingredients: meat and animal products (dehydrated poultry meat, dried fish meat, salmon extract, poultry liver), cereals (rice, corn), by-products of plant origin (corn gluten, sugar beet steak), oils and fats (poultry fat, sunflower oil, salmon oil), yeast, Yucca Shidigera, probiotic substances, minerals and vitamins. It also contains antioxidants, preservatives, dyes, flavours.



LOGISTIC DATA			
PACKAGING	ORDER CODE	EAN CODE	PER PALLET
1 kg	14	8595045401728	400 pcs
3 kg	15	8595045403265	135 pcs
15 kg	16	8595045401735	36 pcs

CD PUPPY MAXI

COMPLETE FEED-STUFFS FOR PUPPIES OF LARGE RACES

33 | 19

The proportion of individual nutrients, as well as macro and microelements, is compiled in such a way as to ensure proper development together with the prevention of disorders of the skeletal and ligamentous apparatus. Vitamins fully cover the needs of a growing puppy.



The specially used ingredients and other complements of this food allow a correct and healthy breeding of puppies of large dog breeds. The food fulfills the strictest criteria of nutritive and dietetic values. The share of proteins is ensured mainly by animal stuff (poultry meat and products), besides there is a higher share of vitamin C helping the collagen biosynthesis necessary for an optimum growth and development of bone and gristle tissues.

RECOMMENDED DOSAGE		
WEIGHT OF DOG - DAILY DOSE		
MONTHS	BIG	GIANT
	g	g
2	250 – 320	340 – 385
4	310 – 430	480 – 570
6	360 – 470	500 – 600
12	450 – 570	620 – 720

The recommended dosage is only approximate.

GUARANTEED ANALYSIS	
Crude protein	33%
Crude fat	19%
Inorganic substances (crude ash)	5.5%
Crude fibre	2.8%
Calcium	1.31%
Phosphorus	1.0%

NUTRITIONAL COMPOSITION		
A	Vitamin A (3a672a)	19.000 IU/kg
D3	Vitamin D3 (3a671)	1.900 IU/kg
E	Vitamin E (3a700)	140 mg/kg
Fe	(Ferrous sulphate monohydrate)	180 mg/kg
I	(Potassium iodide)	0.75 mg/kg
Cu	(Copper sulphate pentahydrate)	24 mg/kg
Mn	(Manganese oxide)	50 mg/kg
Zn	(Zinc oxide)	120 mg/kg
Se	(Sodium selenite)	0.23 mg/kg

Ingredients: meat and animal products (dehydrated poultry meat, dried fish meat, salmon extract, poultry liver), cereals (rice, corn), by-products of plant origin (corn gluten, sugar beet steak), oils and fats (poultry fat, sunflower oil, salmon oil), yeast, Yucca Shidigera, probiotic substances, minerals and vitamins. It also contains antioxidants, preservatives, dyes, flavours.



LOGISTIC DATA			
PACKAGING	ORDER CODE	EAN CODE	PER PALLET
1 kg	563	8595045401704	400 pcs
3 kg	17	8595045403210	135 pcs
15 kg	18	8595045401711	36 pcs

CD ADULT MINI

COMPLETE FEED-STUFFS FOR SMALLER ADULT DOGS

30 | 18

Suitable for gravid and breastfeeding female dogs.
The feed creates resistance to stress and strain.
Increases the resistance of your dog's immune system.



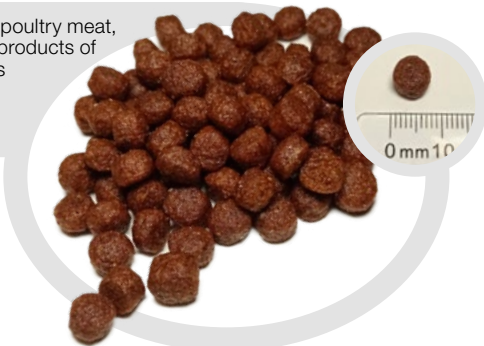
The special recipe of this food fulfills modern requirements for nutrition of smaller adult dogs. The food consists only of vegetable and animal substances beneficial for dogs, are easily digestible, of high nutritive value and nonallergic (does not contain soy and wheat). The contents of the essential nutrients of high digestibility fully satisfy the needs of smaller dogs. Granule shape and size optimized for smaller breeds.

RECOMMENDED DOSAGE		GUARANTEED ANALYSIS		NUTRITIONAL COMPOSITION		
WEIGHT OF DOG	DAILY DOSE					
kg	g					
1 – 5	50 – 130	Crude protein	30%	A	Vitamin A (3a672a)	18.500 IU/kg
5 – 10	135 – 250	Crude fat	18%	D3	Vitamin D3 (3a671)	1.800 IU/kg
10 – 15	255 – 360	Inorganic substances (crude ash)	5.3%	E	Vitamin E (3a700)	125 mg/kg
		Crude fibre	2.9%	Fe	(Ferrous sulphate monohydrate)	190 mg/kg
		Calcium	1.2%	I	(Potassium iodide)	0.75 mg/kg
		Phosphorus	0.9%	Cu	(Copper sulphate pentahydrate)	24 mg/kg
				Mn	(Manganese oxide)	50 mg/kg
				Zn	(Zinc oxide)	120 mg/kg
				Se	(Sodium selenite)	0.23 mg/kg

The recommended dosage is only approximate.

Ingredients: meat and animal products (dehydrated poultry meat, dried fish meat, salmon extract), cereals (rice, corn), by-products of plant origin (corn gluten, sugar beet steak), oils and fats (poultry fat, sunflower oil, salmon oil), yeast, Yucca Shidigera and minerals. It also contains antioxidants, preservatives, dyes, flavours.

LOGISTIC DATA			
PACKAGING	ORDER CODE	EAN CODE	PER PALLET
1 kg	4	8595045401629	400 pcs
3 kg	5	8595045403197	135 pcs
15 kg	6	8595045401636	36 pcs



CD ADULT MAXI

COMPLETE FEED-STUFFS FOR LARGER ADULT DOGS

32 | 18

The contents of macro and microelements fully cover the needs of large adult dogs.
Does not contain soy and wheat.



The special recipe of this food fulfills modern requirements for nutrition of larger adult dogs. The food consists only of vegetable and animal substances beneficial for dogs, are easily digestible, of high nutritive value and nonallergic. The contents of the essential nutrients of high digestibility fully satisfy the needs of larger dogs. Suitable for gravid and breastfeeding female dogs.

RECOMMENDED DOSAGE		GUARANTEED ANALYSIS		NUTRITIONAL COMPOSITION		
WEIGHT OF DOG	DAILY DOSE					
kg	g					
1 – 10	50 – 130	Crude protein	32%	A	Vitamin A (3a672a)	18.500 IU/kg
10 – 20	135 – 250	Crude fat	18%	D3	Vitamin D3 (3a671)	1.600 IU/kg
20 – 30	255 – 360	Inorganic substances (crude ash)	5.4%	E	Vitamin E (3a700)	125 mg/kg
30 – 40	365 – 450	Crude fibre	2.9%	Fe	(Ferrous sulphate monohydrate)	190 mg/kg
40 – 50	460 – 540	Calcium	1.2%	I	(Potassium iodide)	0.75 mg/kg
		Phosphorus	0.9%	Cu	(Copper sulphate pentahydrate)	24 mg/kg
				Mn	(Manganese oxide)	50 mg/kg
				Zn	(Zinc oxide)	120 mg/kg
				Se	(Sodium selenite)	0.23 mg/kg

The recommended dosage is only approximate.

Ingredients: meat and animal products (dehydrated poultry meat, dried fish meat, salmon extract, chicken liver), cereals (rice, corn), by-products of plant origin (corn gluten, sugar beet steak), oils and fats (poultry fat, sunflower oil, salmon oil), yeast, Yucca Shidigera, probiotic substances, minerals and vitamins. It also contains antioxidants, preservatives, dyes, flavours.

LOGISTIC DATA			
PACKAGING	ORDER CODE	EAN CODE	PER PALLET
1 kg	1	8595045401605	400 pcs
3 kg	3	8595045403241	135 pcs
15 kg	2	8595045401612	36 pcs



CD LAMB & RICE SMALL & MEDIUM

COMPLETE FEED-STUFFS - LAMB WITH RICE

23 | 11

The nutritional profile of this food is perfectly suitable for allergic, weakened and recovering dogs.

Does not contain soy and wheat.



This food is based on lamb as the main source of protein and rice as a healthy source of carbohydrates. The shape of granules was especially developed for small and medium breeds. The highly nutritive ingredient of lamb ensures an optimum amino-acid composition of proteins.

RECOMMENDED DOSAGE	
WEIGHT OF DOG	DAILY DOSE
kg	g
1 – 10	50 – 130
10 – 20	135 – 250
20 – 30	255 – 360
30 – 40	365 – 450
40 – 50	460 – 540

The recommended dosage is only approximate.

GUARANTEED ANALYSIS	
Crude protein	23%
Crude fat	11%
Inorganic substances (crude ash)	6.8%
Crude fibre	4%
Calcium	1.5%
Phosphorus	1.15%

NUTRITIONAL COMPOSITION		
A	Vitamin A (3a672a)	16.000 IU/kg
D3	Vitamin D3 (3a671)	1.600 IU/kg
E	Vitamin E (3a700)	141 mg/kg
Fe	(Ferrous sulphate monohydrate)	190 mg/kg
I	(Potassium iodide)	0.9 mg/kg
Cu	(Copper sulphate pentahydrate)	15 mg/kg
Mn	(Manganese oxide)	70 mg/kg
Zn	(Zinc oxide)	140 mg/kg
Se	(Sodium selenite)	0.3 mg/kg

Ingredients: dehydrated lamb meat 37%, white rice 36%, poultry fat, sugar beet, wheat germ, dried apples 4%, corn gluten, salmon extract 3%, hydrolysed poultry liver, probiotics, minerals and vitamins, chondroprotectives (joint nutrition), Yucca Shidigera, milk thistle, mixed fruits (cranberries, blackberries, pomegranate), seaweed, natural antioxidants (rosemary extract).



LOGISTIC DATA			
PACKAGING	ORDER CODE	EAN CODE	PER PALLET
1 kg	435	8595045404231	400 pcs
3 kg	95	8595045403869	135 pcs
12 kg	96	8595045403999	45 pcs

CD LAMB & RICE

COMPLETE FEED-STUFFS - LAMB WITH RICE

23 | 11

The nutritional profile of this food is perfectly suitable for allergic, weakened and recovering dogs.

Does not contain soy and wheat.



The used ingredients create food fulfilling the strictest quality requirements, of nutritive and dietetic full value, high digestibility and low risk of allergy. The food is suitable for all the categories of adult dogs including gravid and breastfeeding female dogs. The highly nutritive ingredient of lamb ensures an optimum amino-acid composition of proteins. Rice as a sugar source increases dietetics and digestibility of this food.

RECOMMENDED DOSAGE	
WEIGHT OF DOG	DAILY DOSE
kg	g
1 – 10	25 – 160
10 – 20	160 – 250
20 – 30	250 – 330
30 – 40	330 – 460
40 – 50	460 – 510

The recommended dosage is only approximate.

GUARANTEED ANALYSIS	
Crude protein	23%
Crude fat	11%
Inorganic substances (crude ash)	6.8%
Crude fibre	4%
Calcium	1.41%
Phosphorus	1.08%

NUTRITIONAL COMPOSITION		
A	Vitamin A (3a672a)	16.000 IU/kg
D3	Vitamin D3 (3a671)	1.600 IU/kg
E	Vitamin E (3a700)	141 mg/kg
Fe	(Ferrous sulphate monohydrate)	190 mg/kg
I	(Potassium iodide)	0.9 mg/kg
Cu	(Copper sulphate pentahydrate)	15 mg/kg
Mn	(Manganese oxide)	70 mg/kg
Zn	(Zinc oxide)	140 mg/kg
Se	(Sodium selenite)	0.3 mg/kg

Ingredients: meat and animal products (dried mutton, poultry liver), cereals (rice, corn), by-products of plant origin (corn gluten, sugar beet steak, wheat germ), fats and oils (poultry fat, sunflower oil), yeast, Yucca Shidigera, minerals. It also contains: antioxidants, preservatives, dyes, flavours.



LOGISTIC DATA			
PACKAGING	ORDER CODE	EAN CODE	PER PALLET
1 kg	97	8595045401681	400 pcs
3 kg	10	8595045403227	135 pcs
15 kg	11	8595045401698	36 pcs

CD BEEF & RICE

COMPLETE FEED-STUFFS FOR DOGS

25 | 10

High palatability of feed.
Optimized granule size and shape.
In older dogs, tipping precedes and tooth loss.
Greater resistance to stress.



The ingredients of this food are based mostly on the share of beef as the main animal stuff and the share of rice as a source of the sugar part. There are no vegetable ingredients used which could cause an allergy (soya, wheat). The food is of good price with a high digestibility and nutritive value.

RECOMMENDED DOSAGE	
WEIGHT OF DOG	DAILY DOSE
kg	g
1 – 10	25 – 160
10 – 20	160 – 250
20 – 30	250 – 330
30 – 40	330 – 460
40 – 50	460 – 510

The recommended dosage is only approximate.

GUARANTEED ANALYSIS	
Crude protein	25%
Crude fat	10%
Inorganic substances (crude ash)	6.5%
Crude fibre	3.2%
Calcium	1.37%
Phosphorus	1.04%

NUTRITIONAL COMPOSITION		
A	Vitamin A (3a672a)	13.450 IU/kg
D3	Vitamin D3 (3a671)	1.300 IU/kg
E	Vitamin E (3a700)	110 mg/kg
Fe	(Ferrous sulphate monohydrate)	264 mg/kg
I	(Potassium iodide)	0.85 mg/kg
Cu	(Copper sulphate pentahydrate)	15 mg/kg
Mn	(Manganese oxide)	65 mg/kg
Zn	(Zinc oxide)	130 mg/kg
Se	(Sodium selenite)	0.8 mg/kg

Ingredients: meat and products of animal origin (dried meat, pressed beef, hydrolyzed liver, salmon extract), cereals (rice, corn), plant by-products (corn gluten, sugar beet pulp), fats and oils (poultry fat, beef tallow, salmon oil), yeast, Yucca Shidigera, rosemary extract, minerals and vitamins. It also contains: antioxidants, preservatives, dyes, flavours.

LOGISTIC DATA			
PACKAGING	ORDER CODE	EAN CODE	PER PALLET
1 kg	7	8595045401643	400 pcs
3 kg	8	8595045403272	135 pcs
15 kg	9	8595045401650	36 pcs



CD SALMON & POTATO

COMPLETE FEED-STUFFS FOR DOGS

24 | 11

The feed is suitable for obese dogs or dogs in recovery. The protein component is secured by salmon fish raw material and the glycidic component by potato starch. Suitable for gravid and breastfeeding female dogs. No soy and wheat.



The used ingredients create food fulfilling the strictest quality requirements, of nutritive and dietetic full value, high digestibility and low risk of allergy. The higher content of Vitamin C supports the collagen biosynthesis. This ensures the correct regeneration of bone and gristle tissues.

RECOMMENDED DOSAGE	
WEIGHT OF DOG	DAILY DOSE
kg	g
5 – 10	60 – 110
10 – 20	110 – 220
20 – 30	220 – 330
30 – 40	330 – 480

The recommended dosage is only approximate.

GUARANTEED ANALYSIS	
Crude protein	24%
Crude fat	11%
Inorganic substances (crude ash)	4.6%
Crude fibre	2.9%
Calcium	1.4%
Phosphorus	1.07%

NUTRITIONAL COMPOSITION		
A	Vitamin A (3a672a)	14.200 IU/kg
D3	Vitamin D3 (3a671)	1.400 IU/kg
E	Vitamin E (3a700)	124 mg/kg
Fe	(Ferrous sulphate monohydrate)	150 mg/kg
I	(Potassium iodide)	0.7 mg/kg
Cu	(Copper sulphate pentahydrate)	13 mg/kg
Mn	(Manganese oxide)	65 mg/kg
Zn	(Zinc oxide)	125 mg/kg
Se	(Sodium selenite)	0.35 mg/kg

Ingredients: meat and animal products 31% (dehydrated poultry meat, dried fish meat, salmon extract), dried potatoes, cereals (rice, corn), by-products of plant origin (corn gluten, sugar beet steak), oils and fats (poultry fat, salmon oil), yeast, Yucca Shidigera, minerals and vitamins. It also contains antioxidants, preservatives, dyes.

LOGISTIC DATA			
PACKAGING	ORDER CODE	EAN CODE	PER PALLET
1 kg	441	8595045401742	400 pcs
3 kg	12	8595045403203	135 pcs
15 kg	13	8595045401759	36 pcs



CD NORMAL

COMPLETE FEED-STUFFS FOR DOGS OF ALL BREEDS

23 | 10



In older dogs it prevents shedding of teeth and helps very good regeneration and prevention of infections and create food of good taste welcome by dogs. It is supported also by the size and shape of granules.

The ingredients of this food are based mostly on the share of beef as the main animal stuff and the share of rice as a source of the sugar part. There are no vegetable ingredients used which could cause an allergy (soya, wheat). The food has a high digestibility and nutritive value. The contents and share of proteins and fat fulfill the requirement for nutrition of all adult dogs kept without a significant activity.

RECOMMENDED DOSAGE		GUARANTEED ANALYSIS		NUTRITIONAL COMPOSITION		
WEIGHT OF DOG	DAILY DOSE	Crude protein	23%	A	Vitamin A (3a672a)	9.000 IU/kg
kg	g	Crude fat	10%	D3	Vitamin D3 (3a671)	850 IU/kg
1 – 10	25 – 160	Inorganic substances (crude ash)	7.5%	E	Vitamin E (3a700)	80 mg/kg
10 – 20	160 – 250	Crude fibre	3.1%	Fe	(Ferrous sulphate monohydrate)	157 mg/kg
20 – 30	250 – 330	Calcium	1.5%	I	(Potassium iodide)	0.78 mg/kg
30 – 40	330 – 460	Phosphorus	1.15%	Cu	(Copper sulphate pentahydrate)	16 mg/kg
40 – 50	460 – 510			Mn	(Manganese oxide)	58 mg/kg
				Zn	(Zinc oxide)	110 mg/kg
				Se	(Sodium selenite)	0.85 mg/kg

The recommended dosage is only approximate.

Ingredients: meat and animal products 36% (dehydrated pork, dehydrated poultry, dehydrated poultry liver), cereals (wheat, rice), fats and oils (pork fat, salmon oil), yeast, Yucca Shidigera, minerals and vitamins. It also contains antioxidants, preservatives, dyes.



LOGISTIC DATA			
PACKAGING	ORDER CODE	EAN CODE	PER PALLET
1 kg	19	8595045401667	400 pcs
3 kg	20	8595045403258	135 pcs
15 kg	21	8595045401674	36 pcs

CD LIGHT

COMPLETE FEED-STUFFS FOR DOGS OF ALL BREEDS

23 | 10



The higher content of vitamin C supports the collagen biosynthesis. This ensures the correct regeneration of bone and gristle tissues and good healing of wounds. In older dogs, this includes prevention of loosening and shedding of teeth.

The used ingredients create food fulfilling the strictest quality requirements, of nutritive and dietetic full value, high digestibility and low risk of allergy. The food is suitable for all the categories of adult dogs including gravid and breastfeeding female dogs. The highly nutritive ingredient of lamb ensures an optimum amino-acid composition of proteins. Rice as a sugar source increases dietetics and digestibility of this food.

RECOMMENDED DOSAGE		GUARANTEED ANALYSIS		NUTRITIONAL COMPOSITION		
WEIGHT OF DOG	DAILY DOSE	Crude protein	23%	A	Vitamin A (3a672a)	14.000 IU/kg
kg	g	Crude fat	10%	D3	Vitamin D3 (3a671)	1.400 IU/kg
1 – 10	25 – 160	Inorganic substances (crude ash)	7.2%	E	Vitamin E (3a700)	120 mg/kg
10 – 20	160 – 250	Crude fibre	3.3%	Fe	(Ferrous sulphate monohydrate)	150 mg/kg
20 – 30	250 – 330	Calcium	1.13%	I	(Potassium iodide)	0.6 mg/kg
30 – 40	330 – 460	Phosphorus	0.9%	Cu	(Copper sulphate pentahydrate)	11 mg/kg
40 – 50	460 – 510			Mn	(Manganese oxide)	55 mg/kg
				Zn	(Zinc oxide)	105 mg/kg
				Se	(Sodium selenite)	0.18 mg/kg

The recommended dosage is only approximate.

Ingredients: meat and animal products (dried poultry meat, dried fish meat, salmon extract), cereals (rice, corn), by-products of plant origin (corn gluten, sugar beet steak), fats and oils (poultry fat, sunflower oil, salmon oil), yeast, Yucca Shidigera, minerals and vitamins. It also contains: It also contains antioxidants, preservatives, dyes, flavours.



LOGISTIC DATA			
PACKAGING	ORDER CODE	EAN CODE	PER PALLET
1 kg	22	8595045401766	400 pcs
3 kg	91	8595045404347	135 pcs
15 kg	23	8595045401773	36 pcs



EXCELLENT®

HIGH QUALITY



ULTRA PREMIUM LINE

The feed of the ULTRA PREMIUM LINE series contains Arctic krill (a mixture of small crustaceans) enriches the dog food with unsaturated Omega 3 and Omega 6 fatty acids, which benefit the immune system. The addition of Glucosamine, Hydrochloride and Chondroitin help protect the dog's locomotive system, while milk thistle helps break down harmful substances and improves your dog's general health.

EXCELLENT CHICKEN

A COMPLETE DOG FOOD FOR SMALL AND MEDIUM BREEDS

29 | 15

suitable for dogs aged 12 months and over



EXCELLENT CHICKEN



ULTRA PREMIUM LINE

ULTRA PREMIUM dog food is completely unique thanks to its composition and ingredients. The advantage of this product is the use of state-of-the-art technology and incorporation of fresh meat in production. With a minimum of 40% fresh chicken and min. 36% white rice, CD Excellent provides an excellent combination of nutrition and easily digestible ingredients that prevents the development of allergies to wheat and soy.

RECOMMENDED DOSAGE		GUARANTEED ANALYSIS		NUTRITIONAL COMPOSITION	
WEIGHT OF DOG	DAILY DOSE				
kg	g				
1 – 2	50 – 80	Crude protein	29%	A	Vitamin A (3a672a) 22.000 IU/kg
2 – 5	80 – 130	Crude fat	15%	D3	Vitamin D3 (3a671) 2.200 IU/kg
5 – 10	130 – 200	Inorganic substances (crude ash)	4.9%	E	Vitamin E (3a700) 159 mg/kg
10 – 15	200 – 350	Crude fibre	2.1%	Fe	(Ferrous sulphate monohydrate) 216,56 mg/kg
15+	350+	Calcium	1.38%	I	(Potassium iodide) 0.89 mg/kg
		Phosphorus	1.05%	Cu	(Copper sulphate pentahydrate) 23.2 mg/kg
				Mn	(Manganese oxide) 66.91 mg/kg
				Zn	(Zinc oxide) 151.65 mg/kg
				Se	(Sodium selenite) 0.29 mg/kg

The recommended dosage is only approximate.

Ingredients: meat and animal products (fresh poultry, crab meal), cereals (high-quality rice), by-products of plant origin (corn gluten, sugar beet pulp), fats and oils (poultry fat), Yucca Shidigera, milk thistle, minerals and vitamins. It also contains: antioxidants, preservatives and flavours.



LOGISTIC DATA			
PACKAGING	ORDER CODE	EAN CODE	PER PALLET
3 kg	71	8595045402787	135 pcs

ALLERGIC TO CHICKEN EXCELLENT BEEF

A COMPLETE DOG FOOD FOR SMALL AND MEDIUM BREEDS

26 | 15

suitable for dogs aged 12 months and over



ULTRA PREMIUM LINE

ULTRA-PREMIUM dog food, with excellent digestibility and taste, made from fresh beef. It contains no dried dehydrated meat (meal), wheat or soy. This ultra-premium dog food is completely unique in its composition, ingredients and low content of inorganic substances (ash). The advantage of this dog food is the use of cutting edge technology and in processing fresh meat. A minimum of 50% fresh beef and a minimum of 28% of white rice is used in production, which is an excellent combination of nutrition and digestibility with a composition that prevents allergies to wheat, soy and chicken.

RECOMMENDED DOSAGE	
WEIGHT OF DOG	DAILY DOSE
kg	g
1 – 2	50 – 80
2 – 5	80 – 130
5 – 10	130 – 200
10 – 15	200 – 350
15+	350+

The recommended dosage is only approximate.

GUARANTEED ANALYSIS	
Crude protein	26%
Crude fat	15%
Inorganic substances (crude ash)	4.7%
Crude fibre	2%
Calcium	1.35%
Phosphorus	1.03%

NUTRITIONAL COMPOSITION		
A	Vitamin A (3a672a)	19.000 IU/kg
D3	Vitamin D3 (3a671)	1.900 IU/kg
E	Vitamin E (3a700)	137 mg/kg
Fe	(Ferrous sulphate monohydrate)	262.56 mg/kg
I	(Potassium iodide)	0.8 mg/kg
Cu	(Copper sulphate pentahydrate)	22.5 mg/kg
Mn	(Manganese oxide)	55.19 mg/kg
Zn	(Zinc oxide)	131.97 mg/kg
Se	(Sodium selenite)	0.27 mg/kg

Ingredients: fresh beef (min. 50%), rice (min. 28%), beef fat, corn gluten, Salmon Pro – sea fish extract, sugar beet pulp, Antarctic krill (min. 2%), hydrolyzed poultry liver, dried apples, dried eggs, Glucosamine – 300 mg/kg, Chondroitin sulfate – 210 mg/kg, Yucca Shidigera – 200 mg/kg, milk thistle – 900 mg/kg, mixture (cranberries, blackberries, pomegranate) – 600 mg/kg, natural antioxidants (rosemary extract), minerals and vitamins.



LOGISTIC DATA			
PACKAGING	ORDER CODE	EAN CODE	PER PALLET
300 g	72	8595045402855	25 pcs/cart
3 kg	73	8595045402862	135 pcs

ALLERGIC TO CHICKEN EXCELLENT RABBIT

A COMPLETE DOG FOOD FOR SMALL AND MEDIUM BREEDS

25 | 14

suitable for dogs aged 12 months and over



ULTRA PREMIUM LINE

ULTRA-PREMIUM dog food, with excellent digestibility and taste, made from fresh rabbit. It contains no dried dehydrated meat (meal), wheat or soy. This ultra-premium dog food is completely unique in its composition, ingredients and low content of inorganic substances (ash). The advantage of this dog food is the use of cutting edge technology and in processing fresh meat. A minimum of 50% fresh rabbit and a minimum of 28% of white rice is used in production, which is an excellent combination of nutrition and digestibility with a composition that prevents allergies to wheat, soy and chicken.

RECOMMENDED DOSAGE	
WEIGHT OF DOG	DAILY DOSE
kg	g
1 – 2	50 – 80
2 – 5	80 – 130
5 – 10	130 – 200
10 – 15	200 – 350
15+	350+

The recommended dosage is only approximate.

GUARANTEED ANALYSIS	
Crude protein	25%
Crude fat	14%
Inorganic substances (crude ash)	4.8%
Crude fibre	2.1%
Calcium	1.29%
Phosphorus	0.97%

NUTRITIONAL COMPOSITION		
A	Vitamin A (3a672a)	19.000 IU/kg
D3	Vitamin D3 (3a671)	1.900 IU/kg
E	Vitamin E (3a700)	138 mg/kg
Fe	(Ferrous sulphate monohydrate)	192.05 mg/kg
I	(Potassium iodide)	0.76 mg/kg
Cu	(Copper sulphate pentahydrate)	21.82 mg/kg
Mn	(Manganese oxide)	54.66 mg/kg
Zn	(Zinc oxide)	129.41 mg/kg
Se	(Sodium selenite)	0.26 mg/kg

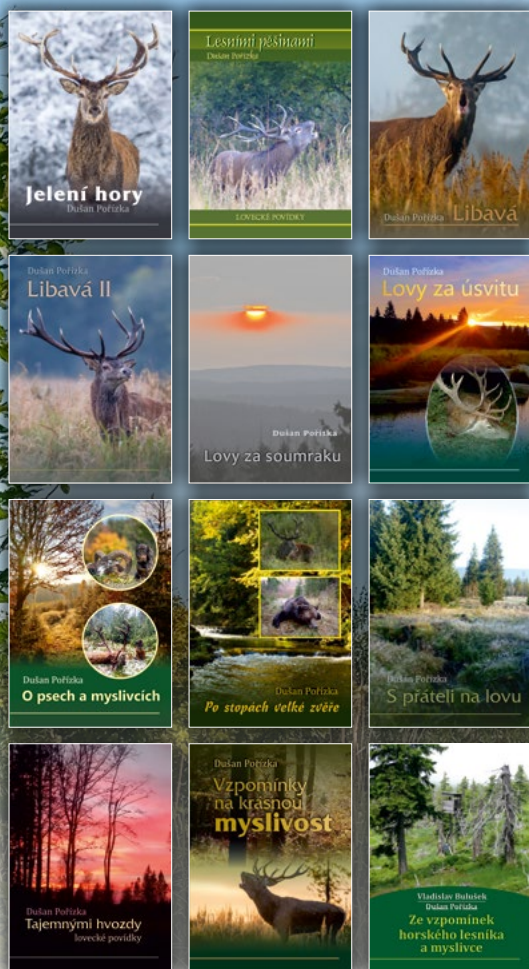
Ingredients: fresh Rabbit (min. 50%), rice (min. 28%), beef fat, corn gluten, Salmon Pro – sea fish extract, sugar beet pulp, Antarctic krill (min. 2%), hydrolyzed poultry liver, dried apples, dried eggs, Glucosamine – 300 mg/kg, Chondroitin sulfate – 210 mg/kg, Yucca Shidigera – 200 mg/kg, milk thistle – 900 mg/kg, mixture (cranberries, blackberries, pomegranate) – 600 mg/kg, natural antioxidants (rosemary extract), minerals and vitamins.



LOGISTIC DATA			
PACKAGING	ORDER CODE	EAN CODE	PER PALLET
300 g	68	8595045402879	25 pcs/cart
3 kg	69	8595045402886	135 pcs

DUŠAN POŘÍZKA

BOOKS WITH THE HUNTER THEME



e-mail: dusan.porizka@seznam.cz

www.dusanporizka.cz

DELIKAN

ORIGINAL

SINCE 1990



COAT CARE
PÉČE O SRST
STAROSTLIVOST O SRST
PFLEGE DES FELLS
PIELÉGNACIA SIERSCI
SZŐRMEÁPOLÁS



HEALTHY GROWTH
ZDRAVÝ RŮST
ZDRAVÝ RAST
GESUNDES WACHSTUM
ZDROWY WZROST
EGÉSZSÉGES NÖVEKEDÉS



GREAT TASTE
VYNIKAJÍCÍ CHUŤ
SKVELÁ CHUŤ
HERVORRAGENDER
GESCHMACK
DOSKONALÝ SMAK
KIVÁLÓ ÍZŰ



IMMUNITY SUPPORT
PODPORA IMUNITY
PODPORA IMUNITY
UNTERSTÜTZUNG DER
IMMUNITÄT
WSPARCIE ODPORNOŚCI
AZ IMMUNITÁS TÁMOGATÁSA



HIGH DIGESTIBILITY
SNADNÁ STRAVITELNOST
VYNIKAJÚCA STRÁVITEĽNOSŤ
LEICHT VERDAULICH
ŁATWA STRAWNOŚĆ
KÖNNYŰ EMESZTHETŐSÉG



TEETH & BONES
ZUBY A KOSTI
ZUBY A KOSTI
ZÄHNE & KNOCHEN
ZĘBY I KOŚCI
FOGAK ÉS CSONTOK



VITALITY
VITALITA
VITALITA
VITALITÄT
VITALNOŚĆ
VITALITÁS



JOINT HEALTH
ZDRAVÉ KLBOUY
ZDRAVIE KLBOV
GESUNDE GELENKE
ZDROWIE STAWY
EGÉSZSÉGES ÍZÜLETEK



12 kg up to 38 days* feed

1 - 7 Years

DELIKAN

ORIGINAL

SINCE 1990



NO SOYA,
WHEAT
AND PORK
MEAT



NO SOYA,
WHEAT
AND PORK
MEAT

DELIKAN

ORIGINAL

SINCE 1990



A COMPLETE PREMIUM FOOD FOR PUPPIES
OF ALL BREEDS

JUNIOR

30 | 17



Complete premium feed for puppies of all breeds. **DELIKAN ORIGINAL JUNIOR is rich in high-quality proteins** (dried poultry) and high-quality fat, which guarantee the healthy growth of your dog. Chondroprotective agents guarantee the proper development of the locomotion system. The salmon extract contained in the feed (Salmon Pro) has a positive influence on the quality of your dog's fur. The size of granules is specially adjusted to growing dogs. Feed does not contain wheat, corn, soya and pork meat.



A COMPLETE PREMIUM FOOD FOR ADULT DOGS OF ALL
BREEDS IN A REGULAR LOAD

ADULT

27 | 15



Complete premium feed for adult dogs of all breeds with normal activity levels. The feed contains dried poultry, which represents a rich source of proteins. Salmon extract has a beneficial influence on the quality of your dog's fur. **DELIKAN ORIGINAL ADULT will keep a dog healthy and strong.** Feed does not contain wheat, corn, soya and pork meat.

RECOMMENDED DOSAGE					GUARANTEED ANALYSIS		NUTRITIONAL COMPOSITION		
AGE OF DOG MONTHS	WEIGHT OF DOG - DAILY DOSE				Crude protein	30%	A	Vitamin A (3a672a)	
	SMALL	MEDIUM	BIG	GIANT				18.500 IU/kg	
	g	g	g	g	Crude fat	17%	D3	Vitamin D3 (3a671)	
2 - 4	85 - 100	130 - 210	250 - 320	340 - 385	Inorganic substances (crude ash)	6.5% <th>E</th> <th colspan="2">Vitamin E (3a700)</th>	E	Vitamin E (3a700)	
4 - 6	125 - 150	210 - 280	310 - 430	480 - 570	Crude fibre	1.9% <th>Fe</th> <th colspan="2">(Ferrous sulphate monohydrate)</th>	Fe	(Ferrous sulphate monohydrate)	
6 - 12	130 - 160	230 - 310	360 - 470	500 - 600	Calcium	1.39% <th>I</th> <th colspan="2">(Potassium iodide)</th>	I	(Potassium iodide)	
12+	Original Adult	Original Adult	Original Adult	Original Adult	Phosphorus	1.09% <th>Cu</th> <th colspan="2">(Copper sulphate pentahydrate)</th>	Cu	(Copper sulphate pentahydrate)	
The recommended dosage is only approximate.							Mn	(Manganese oxide)	
							Zn	(Zinc oxide)	
							Se	(Sodium selenite)	

Ingredients: dehydrated poultry meat - 44%, rice, poultry fat - 10%, dried beet pulp, dried apples, Salmon Pro - marine fish extract - 3%, hydrolysed chicken liver, rosemary oil, milk thistle, glucosamine - 300 mg/kg, chondroitin sulphate - 210 mg/kg, Yucca Shidigera, minerals and vitamins.



LOGISTIC DATA			
PACKAGING	ORDER CODE	EAN CODE	PER PALLET
1 kg	59	8595045402992	300 pcs
12 kg	58	8595045402930	45 pcs

RECOMMENDED DOSAGE		GUARANTEED ANALYSIS		NUTRITIONAL COMPOSITION		
WEIGHT OF DOG	DAILY DOSE	Crude protein	27%	A	Vitamin A (3a672a)	
					16.000 IU/kg	
kg	g	Crude fat	15%	D3	Vitamin D3 (3a671)	
1 - 10	50 - 100	Inorganic substances (crude ash)	6.3% <th>E</th> <th colspan="2">Vitamin E (3a700)</th>	E	Vitamin E (3a700)	
10 - 20	100 - 200	Crude fibre	2.1% <th>Fe</th> <th colspan="2">(Ferrous sulphate monohydrate)</th>	Fe	(Ferrous sulphate monohydrate)	
20 - 30	200 - 310	Calcium	1.36% <th>I</th> <th colspan="2">(Potassium iodide)</th>	I	(Potassium iodide)	
30 - 40	310 - 420	Phosphorus	1.07% <th>Cu</th> <th colspan="2">(Copper sulphate pentahydrate)</th>	Cu	(Copper sulphate pentahydrate)	
40 - 50	420 - 510			Mn	(Manganese oxide)	
The recommended dosage is only approximate.				Zn	(Zinc oxide)	
				Se	(Sodium selenite)	

Ingredients: dehydrated poultry meat - 41%, rice, poultry fat, dried beet pulp, dried apples, Salmon Pro - marine fish extract - 3%, hydrolysed chicken liver, rosemary oil, milk thistle, glucosamine - 300 mg/kg, chondroitin sulphate - 210 mg/kg, probiotics, Yucca Shidigera, minerals and vitamins.



LOGISTIC DATA			
PACKAGING	ORDER CODE	EAN CODE	PER PALLET
1 kg	65	8595045402985	300 pcs
12 kg	64	8595045402947	45 pcs



SINCE 1990



NO SOYA
AND PORK
MEAT



NO SOYA,
WHEAT
AND PORK
MEAT



SINCE 1990



A COMPLETE PREMIUM FEED FOR ADULT DOGS OF ALL BREEDS OF AGE 1 - 7 YEARS WITH REGULAR ACTIVITY LEVELS

BALANCE 23 | 11



Complete premium feed for adult dogs of all breeds. Feed contains dried poultry, which is a unique source of proteins. Protein and fat contents are adjusted to match the needs of dogs with normal activity levels. **DELIKAN ORIGINAL BALANCE excels at covering all the nutritional needs of your dog**, and so it does not require the use of any nutritional supplements.

RECOMMENDED DOSAGE	
WEIGHT OF DOG	DAILY DOSE
kg	g
1 - 10	50 - 120
10 - 20	120 - 230
20 - 30	230 - 350
30 - 40	350 - 480
40 - 50	480 - 560

The recommended dosage is only approximate.

GUARANTEED ANALYSIS	
Crude protein	23%
Crude fat	11%
Inorganic substances (crude ash)	6.3%
Crude fibre	2.7%
Calcium	1.25%
Phosphorus	0.95%

NUTRITIONAL COMPOSITION		
A	Vitamin A (3a672a)	12.000 IU/kg
D3	Vitamin D3 (3a671)	1.200 IU/kg
E	Vitamin E (3a700)	115 mg/kg
Fe	(Ferrous sulphate monohydrate)	102 mg/kg
I	(Potassium iodide)	0.75 mg/kg
Cu	(Copper sulphate pentahydrate)	16.3 mg/kg
Mn	(Manganese oxide)	66 mg/kg
Zn	(Zinc oxide)	89 mg/kg
Se	(Sodium selenite)	0.23 mg/kg

Ingredients: wheat, dehydrated poultry meat - 28%, poultry fat - 8%, dried beet pulp, dried apples, hydrolysed chicken liver, rosemary oil, glucosamine - 200 mg/kg, chondroitin sulphate - 150 mg/kg, Yucca Shidigera, minerals and vitamins.



LOGISTIC DATA			
PACKAGING	ORDER CODE	EAN CODE	PER PALLET
1 kg	63	8595045403005	300 pcs
12 kg	62	8595045402954	45 pcs



A COMPLETE PREMIUM FEED WITH BEEF AND RICE FOR ADULT DOGS OF ALL BREEDS OF AGE 1 - 7 YEARS WITH REGULAR ACTIVITY LEVELS

CONDITION BEEF 28 | 14



Complete feed with beef and rice for adult dogs of all breeds with regular activity levels. High-quality dried beef together with rice forms the nutritional base that covers all basic needs of your dog. The feed contains Omega 3 and Omega 6 unsaturated fatty acids, which support the health of your dog's skin and fur. Glucosamine and chondroitin sulfate support the correct functioning of joints and also serves as prevention against joint diseases.

RECOMMENDED DOSAGE	
WEIGHT OF DOG	DAILY DOSE
kg	g
1 - 10	50 - 110
10 - 20	110 - 210
20 - 30	210 - 320
30 - 40	320 - 430
40 - 50	430 - 510

The recommended dosage is only approximate.

GUARANTEED ANALYSIS	
Crude protein	28%
Crude fat	14%
Inorganic substances (crude ash)	5.8%
Crude fibre	2.2%
Calcium	1.34%
Phosphorus	1.01%

NUTRITIONAL COMPOSITION		
A	Vitamin A (3a672a)	16.500 IU/kg
D3	Vitamin D3 (3a671)	1.650 IU/kg
E	Vitamin E (3a700)	125 mg/kg
Fe	(Ferrous sulphate monohydrate)	200 mg/kg
I	(Potassium iodide)	0.65 mg/kg
Cu	(Copper sulphate pentahydrate)	18 mg/kg
Mn	(Manganese oxide)	48 mg/kg
Zn	(Zinc oxide)	110 mg/kg
Se	(Sodium selenite)	0.20 mg/kg

Ingredients: dehydrated beef - 42%, rice - 35%, beef fat, dried beet pulp, dried apples, Salmon Pro - marine fish extract - 3%, hydrolysed chicken liver, rosemary oil, milk thistle, glucosamine 3 300 mg/kg, chondroitin sulphate - 210 mg/kg, probiotics, Yucca Shidigera, minerals and vitamins.



LOGISTIC DATA			
PACKAGING	ORDER CODE	EAN CODE	PER PALLET
1 kg	61	8595045403012	300 pcs
12 kg	60	8595045402961	45 pcs



A COMPLETE PREMIUM FOOD FOR PUPPIES OF MEDIUM AND LARGER BREEDS

MAXIMO PUPPY 32 | 18



Premium feed, produced with an emphasis on **high quality raw ingredients**. **Dry meat** (poultry, fish - content **41%**), ensures a well digested source of protein. **Corn and rice** provides the essential carbohydrates. Feed does not contain wheat or soya. **Fats** (poultry fat and salmon fat) ensure and intake of Omega 3 and Omega 6 non-saturated oil acids, which are a quality source of energy. **Chondro-protectives** optimize the development of the movement apparatus. Added **vegetables** (peas, carrots) provide the organism not only with the essential vitamins and natural fibers but also positively influence digestion.

RECOMMENDED DOSAGE	
WEIGHT OF DOG	DAILY DOSE
kg	g
-5	75 - 120
5 - 10	120 - 200
10 - 15	200 - 275
15 - 20	275 - 325
20 - 25	325 - 355
25 - 35	355 - 450
35 - 45	450 - 545
45+	545+

The recommended dosage is only approximate.

GUARANTEED ANALYSIS	
Crude protein	32%
Crude fat	18%
Inorganic substances (crude ash)	4.8%
Crude fibre	2.1%
Calcium	1.28%
Phosphorus	0.97%

NUTRITIONAL COMPOSITION		
A	Vitamin A (3a672a)	22.600 IU/kg
D3	Vitamin D3 (3a671)	2.000 IU/kg
E	Vitamin E (3a700)	140 mg/kg
Fe	(Ferrous sulphate monohydrate)	188 mg/kg
I	(Potassium iodide)	1.2 mg/kg
Cu	(Copper sulphate pentahydrate)	21 mg/kg
Mn	(Manganese oxide)	58.5 mg/kg
Zn	(Zinc oxide)	210.5 mg/kg
Se	(Sodium selenite)	0.20 mg/kg

Ingredients: meat and meat products (dry poultry meat, fish meat, poultry liver) cereals (rice, corn), plant by-products (corn gluten, flax seeds), fats and oils (poultry oil, salmon oil, flax oil) vegetables (peas, carrots) additives for improving the movement apparatus (chondro-protectives), Yucca Shidigera, probiotics, minerals and vitamins. Further contains: antioxidants, preservatives, dyes and flavours.



LOGISTIC DATA			
PACKAGING	ORDER CODE	EAN CODE	PER PALLET
20 kg	49	8595045402121	30 pcs



A COMPLETE PREMIUM FOOD FOR ADULT DOGS MEDIUM AND LARGE BREEDS

MAXIMO ADULT 26 | 14



Premium feed, produced with an emphasis on **high quality raw ingredients**, which are offered on the world market. High quality **dry meat** (poultry - **35%**), comes from a renowned producer and ensures a good source of protein, which is well digested. Grains (**corn and corn extracts, rice**) ensure a good supply of carbohydrates and fibers. Feed does not contain wheat or soya. **Fat** (for example, poultry fat a salmon oil) as a source of energy ensures a balanced intake of Omega 3 and Omega 6 non-saturated oil acids. **Chondro-protective additives** optimize the movement apparatus. **Vegetables** (peas, carrots) supply the organism not only with essential natural vitamins but also have a positive influence on the digestive system and the activities of the dog's internal organs. Probiotics improve digestive activities.

RECOMMENDED DOSAGE	
WEIGHT OF DOG	DAILY DOSE
kg	g
-5	75 - 120
5 - 10	120 - 200
10 - 15	200 - 275
15 - 20	275 - 325
20 - 25	325 - 355
25 - 35	355 - 450
35 - 45	450 - 545
45+	545+

The recommended dosage is only approximate.

GUARANTEED ANALYSIS	
Crude protein	26%
Crude fat	14%
Inorganic substances (crude ash)	4.6%
Crude fibre	2.8%
Calcium	1.16%
Phosphorus	0.91%

NUTRITIONAL COMPOSITION		
A	Vitamin A (3a672a)	24.000 IU/kg
D3	Vitamin D3 (3a671)	2.000 IU/kg
E	Vitamin E (3a700)	145 mg/kg
Fe	(Ferrous sulphate monohydrate)	186 mg/kg
I	(Potassium iodide)	1.2 mg/kg
Cu	(Copper sulphate pentahydrate)	22.5 mg/kg
Mn	(Manganese oxide)	57.3 mg/kg
Zn	(Zinc oxide)	170 mg/kg
Se	(Sodium selenite)	0.20 mg/kg

Ingredients: meat and meat products (dry poultry meat, poultry liver), cereals (rice, corn), plant by-products (corn gluten, flax seeds), fats and oils (poultry oil, salmon oil, flax oil), vegetables (peas, carrots), additives for improving the movement apparatus (chondro-protectives), Yucca Shidigera, probiotics, vitamins and minerals. Further contains: antioxidants, preservatives, dyes and flavours.



LOGISTIC DATA			
PACKAGING	ORDER CODE	EAN CODE	PER PALLET
20 kg	52	8595045402114	30 pcs





A COMPLETE PREMIUM FOOD FOR ADULT DOGS WITH LAMB AND RICE

MAXIMO LAMB 26 | 14



Premium feed, produced with an emphasis from high quality lamb flour (from New Zealand) ensures immunity from allergies (especially digestive and skin). High quality dry meat (lamb - 30%), ensures high digestion of protein. Grains (corn and corn extracts, rice) ensure a good supply of carbohydrates and fibers. Feed does not contain wheat or soya. Fat (for example, poultry fat a salmon oil) as a source of energy ensures a balanced intake of Omega 3 and Omega 6 non-saturated oil acids. Chondro-protective additives optimize the movement apparatus. Vegetables (peas, carrots) supply the organism not only with essential natural vitamins but also have a positive influence on the digestive system and the activities of the dog's internal organs. Probiotics improve digestive activities.

RECOMMENDED DOSAGE	
WEIGHT OF DOG	DAILY DOSE
kg	g
-5	75 - 120
5 - 10	120 - 200
10 - 15	200 - 275
15 - 20	275 - 325
20 - 25	325 - 355
25 - 35	355 - 450
35 - 45	450 - 545
45+	545+

The recommended dosage is only approximate.

GUARANTEED ANALYSIS	
Crude protein	26%
Crude fat	14%
Inorganic substances (crude ash)	5.6%
Crude fibre	3.1%
Calcium	1.29%
Phosphorus	0.95%

NUTRITIONAL COMPOSITION		
A	Vitamin A (3a672a)	17.400 IU/kg
D3	Vitamin D3 (3a671)	1.600 IU/kg
E	Vitamin E (3a700)	135 mg/kg
Fe	(Ferrous sulphate monohydrate)	166 mg/kg
I	(Potassium iodide)	1.1 mg/kg
Cu	(Copper sulphate pentahydrate)	22 mg/kg
Mn	(Manganese oxide)	47.8 mg/kg
Zn	(Zinc oxide)	200 mg/kg
Se	(Sodium selenite)	0.20 mg/kg

Ingredients: meat and meat products (dry lamb meat), cereals (rice, corn), plant by-products (corn gluten, flax seeds), fats and oils (pork lard, salmon oil, flax oil), vegetables (corn, carrots) additives for improving the movement apparatus (chondro-protectives), Yucca Shidigera, probiotics, minerals and vitamins. Further contains: antioxidants, preservatives and dyes.



LOGISTIC DATA			
PACKAGING	ORDER CODE	EAN CODE	PER PALLET
20 kg	51	8595045402138	30 pcs



A COMPLETE PREMIUM FOOD FOR DOGS WITH A LOW LOAD

MAXIMO MAINTENANCE 22 | 10



Premium feed, adapted for supplying all essential nutrients, trace elements and vitamins for your dog. High quality raw ingredients are used, which ensure good digestion, do not disturb the dog's digestive tract and aid in good vitality. Dry meat (poultry - content 30%), ensures a good digestive source of protein. Corn and rice supplies the needed carbohydrates. Feed does not contain wheat or soya. Fats (poultry fat, salmon fat) ensure a healthy intake of Omega 3 and Omega 6 non-saturated oil acids. Chondro-protective additives optimize the movement apparatus. Vegetables (peas, carrots) supply natural vitamins.

RECOMMENDED DOSAGE	
WEIGHT OF DOG	DAILY DOSE
kg	g
-5	75 - 120
5 - 10	120 - 200
10 - 15	200 - 275
15 - 20	275 - 325
20 - 25	325 - 355
25 - 35	355 - 450
35 - 45	450 - 545
45+	545+

The recommended dosage is only approximate.

GUARANTEED ANALYSIS	
Crude protein	22%
Crude fat	10%
Inorganic substances (crude ash)	8.2%
Crude fibre	3.1%
Calcium	1.36%
Phosphorus	1.04%

NUTRITIONAL COMPOSITION		
A	Vitamin A (3a672a)	11.150 IU/kg
D3	Vitamin D3 (3a671)	920 IU/kg
E	Vitamin E (3a700)	92 mg/kg
Fe	(Ferrous sulphate monohydrate)	171 mg/kg
I	(Potassium iodide)	1.4 mg/kg
Cu	(Copper sulphate pentahydrate)	19.4 mg/kg
Mn	(Manganese oxide)	39.9 mg/kg
Zn	(Zinc oxide)	100.2 mg/kg
Se	(Sodium selenite)	1.1 mg/kg

Ingredients: meat and meat products (dry poultry meat, poultry liver), cereals (rice, corn), plant by-products (corn gluten, flax seeds), fats and oils (poultry oil, salmon oil, flax oil) vegetables (peas, carrots) additives for improving the movement apparatus (chondro-protectives), Yucca Shidigera, probiotics, minerals and vitamins. Further contains: antioxidants, preservatives and dyes.



LOGISTIC DATA			
PACKAGING	ORDER CODE	EAN CODE	PER PALLET
20 kg	50	8595045402145	30 pcs



DELIKAN 
COMPLETE FOOD FOR DOGS



PREMIUM MIX



A high-quality complete food for adult dogs of all breeds. The mixture of different shapes and flavors ensures the healthy development of your dog and is also easily digestible. The feed contains a balanced mixture of essential amino acids, vitamins and minerals as well as a salmon extract for the right ratio of unsaturated omega-3 and omega-6 fatty acids.

RECOMMENDED DOSAGE	
WEIGHT OF DOG	DAILY DOSE
kg	g
-5	75 - 120
5 - 10	120 - 200
10 - 15	200 - 275
15 - 20	275 - 325
20 - 25	325 - 355
25 - 35	355 - 450
35 - 45	450 - 545
45+	545+

The recommended dosage is only approximate.

GUARANTEED ANALYSIS	
Crude protein	25%
Crude fat	12%
Inorganic substances (crude ash)	7%
Crude fibre	3%
Calcium	1.29%
Phosphorus	0.98%

NUTRITIONAL COMPOSITION		
A	Vitamin A (3a672a)	15.000 IU/kg
D3	Vitamin D3 (3a671)	1.500 IU/kg
E	Vitamin E (3a700)	120 mg/kg
Fe	(Ferrous sulphate monohydrate)	135 mg/kg
I	(Potassium iodide)	0.66 mg/kg
Cu	(Copper sulphate pentahydrate)	22 mg/kg
Mn	(Manganese oxide)	44.9 mg/kg
Zn	(Zinc oxide)	88 mg/kg
Se	(Sodium selenite)	0.15 mg/kg

Ingredients: dehydrated pork, poultry and beef, corn, wheat, poultry fat, rice, beet pulp, hydrolyzed chicken liver, salmon extract, Yucca Shidigera, rosemary extract, minerals and vitamins.



LOGISTIC DATA			
PACKAGING	ORDER CODE	EAN CODE	PER PALLET
15 kg	567	8595045404507	36 pcs



A COMPLETE FOOD COVERING ALL OF THE NUTRITIONAL NEEDS OF YOUR DOG.

DELIKAN FIT 2018



FIT food is intended for all dog breeds; its advantage is a balanced composition of ingredients. The new formula ensures easy digestibility and improves flavor.

RECOMMENDED DOSAGE	
WEIGHT OF DOG	DAILY DOSE
kg	g
-5	75 - 120
5 - 10	120 - 200
10 - 15	200 - 275
15 - 20	275 - 325
20 - 25	325 - 355
25 - 35	355 - 450
35 - 45	450 - 545
45+	545+

The recommended dosage is only approximate.

GUARANTEED ANALYSIS	
Crude protein	20%
Crude fat	7.5%
Inorganic substances (crude ash)	6.6%
Crude fibre	3.6%
Calcium	1.15%
Phosphorus	0.88%

NUTRITIONAL COMPOSITION		
A	Vitamin A (3a672a)	6.000 IU/kg
D3	Vitamin D3 (3a671)	600 IU/kg
E	Vitamin E (3a700)	50 mg/kg
Fe	(Ferrous sulphate monohydrate)	100 mg/kg
I	(Potassium iodide)	0.5 mg/kg
Cu	(Copper sulphate pentahydrate)	15 mg/kg
Mn	(Manganese oxide)	71 mg/kg
Zn	(Zinc oxide)	90 mg/kg
Se	(Sodium selenite)	1.02 mg/kg

Ingredients: meat and animal products (pork meal, poultry meal), cereals and cereal by-products (wheat, maize), fats and oils (animal fat), salt, minerals and vitamins. Also contains: antioxidants, preservatives, dyes, flavours.



LOGISTIC DATA			
PACKAGING	ORDER CODE	EAN CODE	PER PALLET
10 kg	57	8595045401865	50 pcs

NO SOYA



A COMPLETE ECONOMIC FOOD FOR DOGS WITH A LOW LOAD WITH THE ADDITION OF CHICKEN MEAT

OPTIMAL CHICKEN 23 | 10



The feed-stuffs are produced of easily digestible components that are chosen especially for the needs of your four-legpets. Natural mineral substances and vitamins, proteins, carbohydrates, animal fats and vegetable oils are balanced in optimal proportions in this product. Optimal Dog meets all claims and requirements for dog's nutrition. On production, top extrusion technology of American production is used, therefore, the feed -stuffs are highly usable and easily digestible.

RECOMMENDED DOSAGE	
WEIGHT OF DOG	DAILY DOSE
kg	g
-5	75 - 120
5 - 10	120 - 190
10 - 15	190 - 260
15 - 20	260 - 325
20 - 25	325 - 355
25 - 35	355 - 450
35 - 45	450+

The recommended dosage is only approximate.

GUARANTEED ANALYSIS	
Crude protein	23%
Crude fat	10%
Inorganic substances (crude ash)	8.0%
Crude fibre	3.0%
Calcium	1.28%
Phosphorus	1.02%

NUTRITIONAL COMPOSITION		
A	Vitamin A (3a672a)	12.500 IU/kg
D3	Vitamin D3 (3a671)	1.200 IU/kg
E	Vitamin E (3a700)	115 mg/kg
Fe	(Ferrous sulphate monohydrate)	165 mg/kg
I	(Potassium iodide)	0.95 mg/kg
Cu	(Copper sulphate pentahydrate)	22 mg/kg
Mn	(Manganese oxide)	79 mg/kg
Zn	(Zinc oxide)	130 mg/kg
Se	(Sodium selenite)	1.2 mg/kg

Ingredients: cereals, meat and products of animal origin, fats and oils, mineral substances and vitamins. Also contains: antioxidants, preservatives, dyes and flavours.



LOGISTIC DATA			
PACKAGING	ORDER CODE	EAN CODE	PER PALLET
10 kg	46	8595045401995	50 pcs

NO SOYA



A COMPLETE ECONOMIC FOOD FOR DOGS WITH A LOW LOAD WITH THE ADDITION OF BEEF

OPTIMAL BEEF 23 | 10



The feed-stuffs are produced of easily digestible components that are chosen especially for the needs of your four-legpets. Natural mineral substances and vitamins, proteins, carbohydrates, animal fats and vegetable oils are balanced in optimal proportions in this product. Optimal Dog meets all claims and requirements for dog's nutrition. On production, top extrusion technology of American production is used, therefore, the feed -stuffs are highly usable and easily digestible.

RECOMMENDED DOSAGE	
WEIGHT OF DOG	DAILY DOSE
kg	g
-5	75 - 120
5 - 10	120 - 190
10 - 15	190 - 260
15 - 20	260 - 325
20 - 25	325 - 355
25 - 35	355 - 450
35 - 45	450+

The recommended dosage is only approximate.

GUARANTEED ANALYSIS	
Crude protein	23%
Crude fat	10%
Inorganic substances (crude ash)	8.0%
Crude fibre	3.0%
Calcium	1.31%
Phosphorus	1.05%

NUTRITIONAL COMPOSITION		
A	Vitamin A (3a672a)	12.500 IU/kg
D3	Vitamin D3 (3a671)	1.200 IU/kg
E	Vitamin E (3a700)	115 mg/kg
Fe	(Ferrous sulphate monohydrate)	165 mg/kg
I	(Potassium iodide)	0.95 mg/kg
Cu	(Copper sulphate pentahydrate)	22 mg/kg
Mn	(Manganese oxide)	79 mg/kg
Zn	(Zinc oxide)	130 mg/kg
Se	(Sodium selenite)	1.2 mg/kg

Ingredients: cereals, meat and products of animal origin, fats and oils, mineral substances and vitamins. Also contains: antioxidants, preservatives, dyes and flavours.



LOGISTIC DATA			
PACKAGING	ORDER CODE	EAN CODE	PER PALLET
10 kg	47	8595045401988	50 pcs

CD ECONOMY

COMPLETE FEED-STUFFS FOR DOGS - REGULAR ACTIVITY

16 | 7

Economy



The feed-stuffs are produced of easily digestible components that are chosen especially for the needs of your four-leggeds. Natural mineral substances and vitamins, proteins, carbohydrates, animal fats and vegetable oils are balanced in optimal proportions in this product. CD Economy meets all claims and requirements for dog's nutrition. These feed-stuffs are highly usable and easily digestible. It does not contain any soya.

RECOMMENDED DOSAGE	
WEIGHT OF DOG	DAILY DOSE
kg	g
1 - 10	50 - 130
11 - 20	135 - 250
21 - 30	255 - 360
31 - 40	365 - 450
41 - 50	460 - 540

The recommended dosage is only approximate.

GUARANTEED ANALYSIS	
Crude protein	16%
Crude fat	7%
Inorganic substances (crude ash)	5.5%
Crude fibre	4%
Calcium	1.30%
Phosphorus	0.98%

NUTRITIONAL COMPOSITION		
A	Vitamin A (3a672a)	6.000 IU/kg
D3	Vitamin D3 (3a671)	650 IU/kg
E	Vitamin E (3a700)	50 mg/kg
Fe	(Ferrous sulphate monohydrate)	98 mg/kg
I	(Potassium iodide)	0.5 mg/kg
Cu	(Copper sulphate pentahydrate)	14.7 mg/kg
Mn	(Manganese oxide)	53 mg/kg
Zn	(Zinc oxide)	76.5 mg/kg
Se	(Sodium selenite)	0.2 mg/kg

Ingredients: cereals, vegetable by-products, meat and animal products, yeast, fats and oils, minerals. Product also contains antioxidants, preservatives, dyes and flavours.



LOGISTIC DATA			
PACKAGING	ORDER CODE	EAN CODE	PER PALLET
1 kg	25	8595045401803	400 pcs
10 kg	24	8595045401780	50 pcs

DELIKAN CLASSIC

COMPLETE ECONOMIC FOOD FOR ADULT DOGS OF ALL BREEDS WITH A LOW LOAD

20 | 8



Food is biologically constructed of quality materials, which are under constant quality control and constant veterinary supervision. Delikan Classic is manufactured according to the latest scientific discoveries. Technology is developed, which is easy for dogs and highly digestible, has a balanced vitamins, minerals and trace elements. Starches are cooked and converted into quick energy source. Feed excellently covers all the needs of the dog and therefore it is not necessary to add any additives.

RECOMMENDED DOSAGE	
WEIGHT OF DOG	DAILY DOSE
kg	g
0 - 5	- 130
5 - 10	130 - 200
10 - 15	200 - 250
15 - 20	250 - 310
20 - 25	310 - 380
25 - 35	380 - 450
35 - 45	450 - 520

The recommended dosage is only approximate.

GUARANTEED ANALYSIS	
Crude protein	20%
Crude fat	8%
Inorganic substances (crude ash)	5.5%
Crude fibre	3.5%
Calcium	1.20%
Phosphorus	0.92%

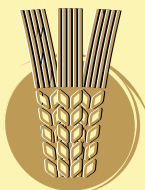
NUTRITIONAL COMPOSITION		
A	Vitamin A (3a672a)	8.000 IU/kg
D3	Vitamin D3 (3a671)	750 IU/kg
E	Vitamin E (3a700)	65 mg/kg
Fe	(Ferrous sulphate monohydrate)	140 mg/kg
I	(Potassium iodide)	0.6 mg/kg
Cu	(Copper sulphate pentahydrate)	14.5 mg/kg
Mn	(Manganese oxide)	50 mg/kg
Zn	(Zinc oxide)	95 mg/kg
Se	(Sodium selenite)	0.6 mg/kg

Ingredients: cereals and vegetable by-products, meat and animal products, yeast, fats and oils, minerals and vitamins. Product also contains antioxidants, preservatives, dyes and flavours.



LOGISTIC DATA			
PACKAGING	ORDER CODE	EAN CODE	PER PALLET
1 kg	67	8595045400349	400 pcs
10 kg	66	8595045400325	50 pcs

ADDITIONAL FEED



INSTANT PASTA PREPARED WITHOUT COOKING!

PASTA NATURAL
11 | 3



Suitable for all dog breeds, Instant Pasta has been designed as an ideal accompaniment to meat and cans. Soaking in warm water or broth increases its volume, while retaining the shape. The pasta contains natural fiber.

GUARANTEED ANALYSIS	
Crude protein	11%
Crude fat	2.5%
Inorganic substances (crude ash)	2.6%
Crude fibre	2.7%

Ingredients: cereals (wheat, corn, wheat flour), salt.

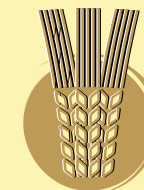
Feeding instructions: Pour warm water or broth over the extruded pasta. After soaking, you can mix it with canned dog food or meat.

Dosage: by individual

LOGISTIC DATA			
PACKAGING	ORDER CODE	EAN CODE	PER PALLET
3 kg	29	8595045401940	135 pcs



ADDITIONAL FEED



INSTANT PASTA PREPARED WITHOUT COOKING!

PASTA WITH CARROT
11 | 3



Suitable for all dog breeds, Instant Pasta has been designed as an ideal accompaniment to meat and cans. Soaking in warm water or broth increases its volume, while retaining the shape. The pasta contains freshly grated carrots and is enriched with natural fiber.

GUARANTEED ANALYSIS	
Crude protein	11%
Crude fat	2.5%
Inorganic substances (crude ash)	2.6%
Crude fibre	2.7%

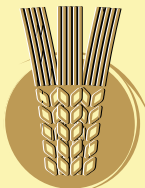
Ingredients: cereals (wheat, corn, wheat flour), carrot, salt.

Feeding instructions: Pour warm water or broth over the extruded pasta. After soaking, you can mix it with canned dog food or meat.

Dosage: by individual

LOGISTIC DATA			
PACKAGING	ORDER CODE	EAN CODE	PER PALLET
3 kg	28	8595045401957	135 pcs





INSTANT PASTA PREPARED WITHOUT COOKING!

PASTA WITH SEAWEED 11 | 3



Suitable for all dog breeds, Instant Pasta has been designed as an ideal accompaniment to meat and cans. Soaking in warm water or broth increases its volume, while retaining the shape. The pasta contains seaweed, which has a beneficial effect on intestinal microflora.

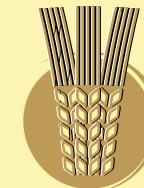
GUARANTEED ANALYSIS	
Crude protein	11%
Crude fat	2.5%
Inorganic substances (crude ash)	2.6%
Crude fibre	2.7%

Ingredients: cereals (wheat, corn, wheat flour), seaweed, salt.

Feeding instructions: Pour warm water or broth over the extruded pasta. After soaking, you can mix it with canned dog food or meat.

Dosage: by individual

LOGISTIC DATA			
PACKAGING	ORDER CODE	EAN CODE	PER PALLET
3 kg	27	8595045401971	135 pcs



INSTANT PASTA PREPARED WITHOUT COOKING!

PASTA WITH EGGS 11 | 3



Suitable for all dog breeds, Instant Pasta has been designed as an ideal accompaniment to meat and cans. Soaking in warm water or broth increases its volume, while retaining the shape. The pasta is enriched with dried eggs, which improve its taste and nutritional value.

GUARANTEED ANALYSIS	
Crude protein	11%
Crude fat	2.5%
Inorganic substances (crude ash)	2.6%
Crude fibre	2.7%

Ingredients: cereals (wheat, corn, wheat flour), dried eggs, salt.

Feeding instructions: Pour warm water or broth over the extruded pasta. After soaking, you can mix it with canned dog food or meat.

Dosage: by individual

LOGISTIC DATA			
PACKAGING	ORDER CODE	EAN CODE	PER PALLET
3 kg	26	8595045401964	135 pcs



SUPER PREMIUM LINE

DELIKAN  SUPRA CAT



KITTEN
35 | 24



A complete feed for kittens from the 1st month of age produced of selected kinds of ingredients. Quality and digestibility are a common sign while developing recipes for this feed. The main component is poultry meat and high-quality fish meat combined with corn and rice, which add necessary fibre to the feed. High-quality oils and animal fat, poultry liver and other ingredients of animal origin are a source of energy and a tasty complement. Mineral substances, vitamins and articular nutrients, which contribute to healthy development of the cat, its locomotory system, and substances supporting the correct development of sight are natural components of this feed.

RECOMMENDED DOSAGE	
WEIGHT OF CAT	DAILY DOSE
kg	g
0,5 – 1	25 – 45
1 – 1.5	45 – 75
1.5 – 2	55 – 100
2 – 2.5	80 – 130

The recommended dosage is only approximate.

GUARANTEED ANALYSIS	
Crude protein	35%
Crude fat	24%
Inorganic substances (crude ash)	5.4%
Crude fibre	1.99%
Calcium	1.21%
Phosphorus	0.99%

NUTRITIONAL COMPOSITION		
A	Vitamin A (3a672a)	28.000 IU/kg
D3	Vitamin D3 (3a671)	2.200 IU/kg
E	Vitamin E (3a700)	200 mg/kg
Fe	(Ferrous sulphate monohydrate)	205 mg/kg
I	(Potassium iodide)	1.0 mg/kg
Cu	(Copper sulphate pentahydrate)	24.1 mg/kg
Mn	(Manganese oxide)	66.0 mg/kg
Zn	(Zinc oxide)	180.0 mg/kg
Se	(Sodium selenite)	0.24 mg/kg

Ingredients: meat and products of animal origin (dried poultry meat, fish meat, poultry liver), cereals (rice, corn), plant by-products (corn gluten), fat and oils (poultry fat, salmon oil), components for improvement of the locomotory system (chondroprotectives), Yucca Shidigera, probiotics, minerals and vitamins. It also includes the following: antioxidants, preservatives.



LOGISTIC DATA			
PACKAGING	ORDER CODE	EAN CODE	PER PALLET
1.5 kg	77	8595045402244	250 pcs
10 kg	76	8595045402299	50 pcs

SUPER PREMIUM LINE

DELIKAN  SUPRA CAT



CASTRATE
30 | 10



The main component is poultry meat and high-quality fish meat combined with corn and rice, which add necessary fibre to the organism. High-quality oils and animal fat, poultry liver and other ingredients of the animal origin in a suitable ratio are a source of energy and a tasty complement. Additives for improvement of the locomotory system and substances that support correct development of sight and function of the digestive and excretion systems are a matter of fact in this feed.

RECOMMENDED DOSAGE	
WEIGHT OF CAT	DAILY DOSE
kg	g
- 2	30 – 40
2 – 3	45 – 55
3 – 4	55 – 65
4 – 5	60 – 80
5 – 6	70 – 90
7+	90 – 130

The recommended dosage is only approximate.

GUARANTEED ANALYSIS	
Crude protein	30%
Crude fat	9.9%
Inorganic substances (crude ash)	5.1%
Crude fibre	2.3%
Calcium	1.24%
Phosphorus	1.01%

NUTRITIONAL COMPOSITION		
A	Vitamin A (3a672a)	18.000 IU/kg
D3	Vitamin D3 (3a671)	1.600 IU/kg
E	Vitamin E (3a700)	134 mg/kg
Fe	(Ferrous sulphate monohydrate)	200 mg/kg
I	(Potassium iodide)	1.0 mg/kg
Cu	(Copper sulphate pentahydrate)	20.6 mg/kg
Mn	(Manganese oxide)	52.6 mg/kg
Zn	(Zinc oxide)	129.2 mg/kg
Se	(Sodium selenite)	0.21 mg/kg

Ingredients: meat and products of animal origin (dried poultry meat, fish meat, poultry liver), cereals (rice, corn), plant by-products (corn gluten), fat and oils (poultry fat, salmon oil), additives for improvement of the locomotory system (chondroprotectives), Yucca Shidigera, probiotics, minerals and vitamins. It also includes the following: antioxidants, preservatives.



LOGISTIC DATA			
PACKAGING	ORDER CODE	EAN CODE	PER PALLET
1.5 kg	79	8595045402251	250 pcs
10 kg	78	8595045402305	50 pcs

SUPER PREMIUM LINE

DELIKAN  SUPRA CAT



ADULT
31 | 18



The main component is poultry meat and high-quality fish meat combined with corn and rice, which add necessary fibre to the organism. High-quality oils and animal fat, poultry liver and other ingredients of animal origin are a source of energy and a tasty complement. Additives for improvement of the locomotory system and substances that support correct development of sight and function of the digestive and excretion systems are a matter of fact in this feed.

RECOMMENDED DOSAGE	
WEIGHT OF CAT	DAILY DOSE
kg	g
- 2	30 - 40
2 - 3	45 - 55
3 - 4	55 - 65
4 - 5	60 - 80
5 - 6	70 - 90
7+	90 - 130

The recommended dosage is only approximate.

GUARANTEED ANALYSIS	
Crude protein	31%
Crude fat	18%
Inorganic substances (crude ash)	4.1%
Crude fibre	2.1%
Calcium	1.16%
Phosphorus	0.95%

NUTRITIONAL COMPOSITION		
A	Vitamin A (3a672a)	22.000 IU/kg
D3	Vitamin D3 (3a671)	2.000 IU/kg
E	Vitamin E (3a700)	165 mg/kg
Fe	(Ferrous sulphate monohydrate)	188 mg/kg
I	(Potassium iodide)	0.9 mg/kg
Cu	(Copper sulphate pentahydrate)	21.2 mg/kg
Mn	(Manganese oxide)	56.6 mg/kg
Zn	(Zinc oxide)	152.3 mg/kg
Se	(Sodium selenite)	0.23 mg/kg

Ingredients: meat and products of animal origin (dried poultry meat, fish meat, poultry liver), cereals (rice, corn), plant by-products (corn gluten), fat and oils (poultry fat, salmon oil), additives for improvement of the locomotory system (chondroprotectives), Yucca Shidigera, probiotics, minerals and vitamins. It also includes the following: antioxidants, preservatives.



LOGISTIC DATA			
PACKAGING	ORDER CODE	EAN CODE	PER PALLET
1.5 kg	81	8595045402220	250 pcs
10 kg	80	8595045402275	50 pcs

SUPER PREMIUM LINE

DELIKAN  SUPRA CAT



TUNA
29 | 18



The main component is fish meat and an additive of poultry meat combined with corn and rice, which provide the organism with necessary fibre. High-quality oils and animal fat, poultry liver and other ingredients of the animal origin are a source of energy and a tasty complement. Additives for improvement of the locomotory system and substances that support correct development of sight and function of the digestive and excretion systems are a matter of fact in this feed.

RECOMMENDED DOSAGE	
WEIGHT OF CAT	DAILY DOSE
kg	g
- 2	30 - 40
2 - 3	45 - 55
3 - 4	55 - 65
4 - 5	60 - 80
5 - 6	70 - 90
7+	90 - 130

The recommended dosage is only approximate.

GUARANTEED ANALYSIS	
Crude protein	29%
Crude fat	18%
Inorganic substances (crude ash)	4.0%
Crude fibre	2.1%
Calcium	1.19%
Phosphorus	0.98%

NUTRITIONAL COMPOSITION		
A	Vitamin A (3a672a)	22.000 IU/kg
D3	Vitamin D3 (3a671)	2.000 IU/kg
E	Vitamin E (3a700)	160 mg/kg
Fe	(Ferrous sulphate monohydrate)	190 mg/kg
I	(Potassium iodide)	0.88 mg/kg
Cu	(Copper sulphate pentahydrate)	23.5 mg/kg
Mn	(Manganese oxide)	58.0 mg/kg
Zn	(Zinc oxide)	154.0 mg/kg
Se	(Sodium selenite)	0.33 mg/kg

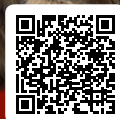
Ingredients: meat and products of animal origin (dried fish meat, poultry meat, poultry liver), cereals (rice, corn), plant by-products (corn gluten), fat and oils (poultry fat, salmon oil), components for improvement of the locomotory system (chondroprotectives), Yucca Shidigera, probiotics, minerals and vitamins. It also includes the following: antioxidants, preservatives.



LOGISTIC DATA			
PACKAGING	ORDER CODE	EAN CODE	PER PALLET
1.5 kg	75	8595045402237	250 pcs
10 kg	74	8595045402282	50 pcs



EXCLUSIVE CAT
COCKTAIL
30 | 10



Premium Cat COCKTAIL is a complete premium cat food. Quality poultry meal and quality fish meal combined with a mixture of selected cereals guarantee easy digestibility of the food and excellent taste. Quality oils and animal fat are used as a source of energy, supplying essential Omega 3 and Omega 6 unsaturated fatty acids. Additives promoting eyesight and healthy functioning of the digestive tract appropriately complement the food and make it very popular.

RECOMMENDED DOSAGE	
WEIGHT OF CAT	DAILY DOSE
kg	g
0.5 – 1.0	25 – 45
1.0 – 1.5	45 – 75
1.5 – 2.0	55 – 100
2.0 – 2.5	80 – 130

The recommended dosage is only approximate.

GUARANTEED ANALYSIS	
Crude protein	30%
Crude fat	10%
Inorganic substances (crude ash)	5.6%
Crude fibre	1.8%
Calcium	1.05%
Phosphorus	0.85%

NUTRITIONAL COMPOSITION		
A	Vitamin A (3a672a)	12.000 IU/kg
D3	Vitamin D3 (3a671)	1.100 IU/kg
E	Vitamin E (3a700)	100 mg/kg
Fe	(Ferrous sulphate monohydrate)	160 mg/kg
I	(Potassium iodide)	0.85 mg/kg
Cu	(Copper sulphate pentahydrate)	11 mg/kg
Mn	(Manganese oxide)	16 mg/kg
Zn	(Zinc oxide)	98 mg/kg
Se	(Sodium selenite)	0.35 mg/kg

Ingredients: cereals (rice, corn), plant by-products (corn gluten), meat and products of animal origin (poultry meal, fish meal, hydrolyzed chicken liver), fat and oils (poultry fat, fish fat), additives to improve eyesight and kidney functions – taurine, Yucca Shidigera, probiotics, mineral substances and vitamins. It also includes the following: antioxidants, preservatives and dyes.



LOGISTIC DATA			
PACKAGING	ORDER CODE	EAN CODE	PER PALLET
400 g	92	8595045400974	20 pcs/crt
2 kg	87	8595045403050	135 pcs
10 kg	88	8595045400684	50 pcs



EXCLUSIVE CAT
FISH
30 | 10



Premium Cat Fish is a premium complete food for cats, where fish flavour enhances its tastiness. Quality poultry meal and quality fish meal combined with a mixture of selected cereals guarantee easy digestibility of the food and excellent taste. Quality oils and animal fat are used as a source of energy, supplying essential Omega 3 and Omega 6 unsaturated fatty acids. Additives promoting eyesight and healthy functioning of the digestive tract appropriately complement the food and make it very popular.

RECOMMENDED DOSAGE	
WEIGHT OF CAT	DAILY DOSE
kg	g
- 2	30 – 40
2 – 3	45 – 55
3 – 4	55 – 65
4 – 5	60 – 80
5 – 6	70 – 90
7+	90 – 130

The recommended dosage is only approximate.

GUARANTEED ANALYSIS	
Crude protein	30%
Crude fat	10%
Inorganic substances (crude ash)	5.6%
Crude fibre	1.8%
Calcium	1.08%
Phosphorus	0.87%

NUTRITIONAL COMPOSITION		
A	Vitamin A (3a672a)	12.000 IU/kg
D3	Vitamin D3 (3a671)	1.100 IU/kg
E	Vitamin E (3a700)	100 mg/kg
Fe	(Ferrous sulphate monohydrate)	160 mg/kg
I	(Potassium iodide)	0.85 mg/kg
Cu	(Copper sulphate pentahydrate)	11 mg/kg
Mn	(Manganese oxide)	16 mg/kg
Zn	(Zinc oxide)	98 mg/kg
Se	(Sodium selenite)	0.35 mg/kg

Ingredients: cereals (rice, corn), plant by-products (corn gluten), meat and products of animal origin (poultry meal, fish meal, hydrolyzed chicken liver), fat and oils (poultry fat, fish fat), additives to improve eyesight and kidney functions – taurine, Yucca Shidigera, probiotics, mineral substances and vitamins. It also includes the following: antioxidants, preservatives and dyes.

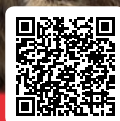


LOGISTIC DATA			
PACKAGING	ORDER CODE	EAN CODE	PER PALLET
2 kg	84	8595045403067	135 pcs
10 kg	85	8595045401179	50 pcs



EXCLUSIVE CAT

WITH CHEESE 30 | 10



Premium Cat WITH CHEESE is a complete food for cats complemented with cheese flavour, the cats like to eat. Quality poultry meal and quality fish meal combined with a mixture of selected cereals guarantee easy digestibility of the food and excellent taste. Quality oils and animal fat are used as a source of energy, supplying essential Omega 3 and Omega 6 unsaturated fatty acids. Additives promoting eyesight and healthy functioning of the digestive tract appropriately complement the food and make it very popular.

RECOMMENDED DOSAGE	
WEIGHT OF CAT	DAILY DOSE
kg	g
0.5 – 1.0	25 – 45
1.0 – 1.5	45 – 75
1.5 – 2.0	55 – 100
2.0 – 2.5	80 – 130

The recommended dosage is only approximate.

GUARANTEED ANALYSIS	
Crude protein	30%
Crude fat	10%
Inorganic substances (crude ash)	5.6%
Crude fibre	1.8%
Calcium	1.04%
Phosphorus	0.84%

NUTRITIONAL COMPOSITION		
A	Vitamin A (3a672a)	12.000 IU/kg
D3	Vitamin D3 (3a671)	1.100 IU/kg
E	Vitamin E (3a700)	100 mg/kg
Fe	(Ferrous sulphate monohydrate)	160 mg/kg
I	(Potassium iodide)	0.85 mg/kg
Cu	(Copper sulphate pentahydrate)	11 mg/kg
Mn	(Manganese oxide)	16 mg/kg
Zn	(Zinc oxide)	98 mg/kg
Se	(Sodium selenite)	0.35 mg/kg

Ingredients: cereals (rice, corn), plant by-products (corn gluten), meat and products of animal origin (poultry meal, fish meal, hydrolyzed chicken liver), fat and oils (poultry fat, fish fat), additives to improve eyesight and kidney functions – taurine, Yucca Shidigera, probiotics, mineral substances and vitamins. It also includes the following: antioxidants, preservatives and dyes.

LOGISTIC DATA			
PACKAGING	ORDER CODE	EAN CODE	PER PALLET
400 g	888	8595045401063	20 pcs/crt
2 kg	82	8595045403074	135 pcs
10 kg	83	8595045401155	50 pcs



EXCLUSIVE CAT

CHICKEN 30 | 10



Premium Cat CHICKEN is a complete food for cats with added chicken. Quality poultry meal and quality fish meal combined with a mixture of selected cereals guarantee easy digestibility of the food and excellent taste. Quality oils and animal fat are used as a source of energy, supplying essential Omega 3 and Omega 6 unsaturated fatty acids. Additives promoting eyesight and healthy functioning of the digestive tract appropriately complement the food and make it very popular.

RECOMMENDED DOSAGE	
WEIGHT OF CAT	DAILY DOSE
kg	g
0.5 – 1.0	25 – 45
1.0 – 1.5	45 – 75
1.5 – 2.0	55 – 100
2.0 – 2.5	80 – 130

The recommended dosage is only approximate.

GUARANTEED ANALYSIS	
Crude protein	30%
Crude fat	10%
Inorganic substances (crude ash)	5.6%
Crude fibre	1.8%
Calcium	0.98%
Phosphorus	0.80%

NUTRITIONAL COMPOSITION		
A	Vitamin A (3a672a)	12.000 IU/kg
D3	Vitamin D3 (3a671)	1.100 IU/kg
E	Vitamin E (3a700)	100 mg/kg
Fe	(Ferrous sulphate monohydrate)	160 mg/kg
I	(Potassium iodide)	0.85 mg/kg
Cu	(Copper sulphate pentahydrate)	11 mg/kg
Mn	(Manganese oxide)	16 mg/kg
Zn	(Zinc oxide)	98 mg/kg
Se	(Sodium selenite)	0.35 mg/kg

Ingredients: cereals (rice, corn), plant by-products (corn gluten), meat and products of animal origin (poultry meal, fish meal, hydrolyzed chicken liver), fat and oils (poultry fat, fish fat), additives to improve eyesight and kidney functions – taurine, Yucca Shidigera, probiotics, mineral substances and vitamins. It also includes the following: antioxidants, preservatives and dyes.

LOGISTIC DATA			
PACKAGING	ORDER CODE	EAN CODE	PER PALLET
10 kg	86	8595045402640	50 pcs



Tasty meat to pasta



BEEF CHUNKS

**JUICY BEEF PIECES
IN A SEASONED SAUCE**

BEEF CHUNKS 7/4

CANNED MEAT



The canned food for dogs is full of juicy beef pieces in a seasoned sauce, supplemented with minerals and vitamins. High-quality oils and animal fats are used as an energy source. It has an excellent taste and aroma and your dog will love it.



GUARANTEED ANALYSIS		NUTRITIONAL COMPOSITION	
Crude protein	7%	A Vitamin A (3a672a)	1.100 IU/kg
Crude fat	4%	D3 Vitamin D3 (3a671)	1510 IU/kg
Inorganic substances (crude ash)	3.5%	E Vitamin E (3a700)	15 mg/kg
Crude fibre	0.4%		
Humidity	80%		

Ingredients: meat and products of animal origin (beef), cereals and by-products from cereals, caramel, thickener, minerals, vitamins. Does not contain preservatives and dyes.

Dosage: by individual

LOGISTIC DATA			
PACKAGING	ORDER CODE	EAN CODE	PER PALLET/BL
1250 g	54	8595045402565	672/6 pcs



DELIKAN  **SUPRA**

BEEF

100% QUALITY AND TASTY MINCED BEEF WITH A LARGE PORTION OF BEEF MUSCLE.

16111



DELIKAN  **SUPRA**

CHICKEN

CAN WITH A LID - 100% QUALITY AND TASTY MINCED BEEF WITH A LARGE PORTION OF CHICKEN

16111



Suitable for all breeds and for all age categories of dogs. Thanks to its honest composition, it contains highly digestible animal proteins. The can does not contain cereals, soy or any dyes or flavours.

GUARANTEED ANALYSIS	
Crude protein	16%
Crude fat	11%
Inorganic substances (crude ash)	2.5%
Crude fibre	0.5%
Humidity	70%

RECOMMENDED DOSAGE	
WEIGHT OF DOG	DAILY DOSE
kg	g
5	200
10	400
20	600
30	800

The recommended dosage is only approximate.

Ingredients: beef, pork, animal by-products (beef offal, muscle 30%).

High natural content of vitamins (A, E, D), amino acids (lysine, methionine, cystine).



LOGISTIC DATA			
PACKAGE	ORDER CODE	EAN CODE	PER PALLET/BL
800 g	447	8595045404088	576/8 pcs



Suitable for all breeds and for all age categories of dogs. Thanks to its honest composition, it contains highly digestible animal proteins. The can does not contain cereals, soy or any dyes or flavours.

GUARANTEED ANALYSIS	
Crude protein	16%
Crude fat	11%
Inorganic substances (crude ash)	2.5%
Crude fibre	0.5%
Humidity	70%

RECOMMENDED DOSAGE	
WEIGHT OF DOG	DAILY DOSE
kg	g
5	200
10	400
20	600
30	800

The recommended dosage is only approximate.

Ingredients: beef, animal by-products - beef offal, chicken 30%.

High natural content of vitamins (A, E, D), amino acids (lysine, methionine, cystine).



LOGISTIC DATA			
PACKAGE	ORDER CODE	EAN CODE	PER PALLET/BL
800 g	456	8595045404095	576/8 pcs



CD BEEF

CAN OF 100 % QUALITY, TASTY, MINCED MEAT

16 | 11



Suitable for all breeds and for all age categories of dogs. Thanks to its honest composition, it contains highly digestible animal proteins. The can does not contain cereals, soy or any dyes or flavours.

GUARANTEED ANALYSIS	
Crude protein	16%
Crude fat	11%
Inorganic substances (crude ash)	2.5%
Crude fibre	0.5%
Humidity	70%

RECOMMENDED DOSAGE	
WEIGHT OF DOG	DAILY DOSE
kg	g
5	200
10	400
20	600
30	800

The recommended dosage is only approximate.

Ingredients: meat and animal by-products (beef 70%, beef offal, pork offal).

High natural content of vitamins (A, E, D), amino acids (lysine, methionine, cystine).



LOGISTIC DATA			
PACKAGING	ORDER CODE	EAN CODE	PER PALLET/BL
1200 g	1200	8595045404118	576/8 pcs



CD CHICKEN

CAN OF 100 % QUALITY, TASTY, MINCED MEAT

16 | 11



Suitable for all breeds and for all age categories of dogs. Thanks to its honest composition, it contains highly digestible animal proteins. The can does not contain cereals, soy or any dyes or flavours.

GUARANTEED ANALYSIS	
Crude protein	16%
Crude fat	11%
Inorganic substances (crude ash)	2.5%
Crude fibre	0.5%
Humidity	70%

RECOMMENDED DOSAGE	
WEIGHT OF DOG	DAILY DOSE
kg	g
5	200
10	400
20	600
30	800

The recommended dosage is only approximate.

Ingredients: meat and animal by-products (poultry 80%, beef offal, pork offal, beef).

High natural content of vitamins (A, E, D), amino acids (lysine, methionine, cystine).



LOGISTIC DATA			
PACKAGING	ORDER CODE	EAN CODE	PER PALLET/BL
1200 g	1201	8595045404125	576/8 pcs

SUPER PREMIUM LINE

DELIKAN  SUPRA CAT



16 | 11

SALMON & BEEF



Salmon and beef pieces of muscle. Quality 100% canned meat, it is suitable for all of breeds and age groups of cats. It contains high digestible animal proteins. The product is not contain soya, it is made without flavours, preservatives and dyes.

GUARANTEED ANALYSIS		NUTRITIONAL COMPOSITION	
Crude protein	16%	A Vitamin A (3a672a)	1.100 IU/kg
Crude fat	11%	D3 Vitamin D3 (3a671)	150 IU/kg
Inorganic substances (crude ash)	2.5%	E Vitamin E (3a700)	15 mg/kg
Crude fibre	0.5%		
Humidity	70%		

Ingredients: 50% salmon, 25% beef muscle, 25% pork muscle.

High natural content of vitamins (A, E, D), amino acids (lysine, methionine, cystine) and minerals.

LOGISTIC DATA			
PACKAGING	ORDER CODE	EAN CODE	PER PALLET/BL
200 g	915	8595045404538	2400/15 pcs



CHICKEN CHUNKS

THE CAN IS FULL OF JUICY PIECES OF CHICKEN



CHICKEN CHUNKS 714



It is a complete food for cats with a balanced composition. The can is full of juicy chicken pieces in a seasoned sauce, supplemented with minerals and vitamins. High-quality oils and animal fats are used as an energy source. It has an excellent taste and aroma.

GUARANTEED ANALYSIS	
Crude protein	7%
Crude fat	4%
Inorganic substances (crude ash)	3.5%
Crude fibre	0.4%
Humidity	80%

Ingredients: meat and products of animal origin (poultry), cereals and by-products from cereals, caramel, thickener, minerals and vitamins.

Does not contain preservatives and dyes.

LOGISTIC DATA			
PACKAGING	ORDER CODE	EAN CODE	PER PALLET/BL
410 g	53	8595045402558	1600/20 pcs



DELIKAN *deLuxe*



With the addition of animal protein

FOR RATS
SUPER PREMIUM FOOD



Complete super premium extruded food for rats. The feed contains animal and plant components. We processed the raw materials contained in the feed in the form of extrusion for better digestibility of the feed while preserving all nutrients. The extruded granules have an optimal hardness suitable for grinding the teeth of rats.

GUARANTEED ANALYSIS		NUTRITIONAL COMPOSITION	
Crude protein	25%	A Vitamin A (3a672a)	15.000 IU/kg
Crude fat	6%	D3 Vitamin D3 (3a671)	1.500 IU/kg
Inorganic substances (crude ash)	8.3%	E Vitamin E (3a700)	126 mg/kg
Crude fibre	4.1%	Fe (Ferrous sulphate monohydrate)	165 mg/kg
Calcium	0.65%	I (Potassium iodide)	0.7 mg/kg
Phosphorus	0.50%	Cu (Copper sulphate pentahydrate)	19 mg/kg
		Mn (Manganese oxide)	64 mg/kg
		Zn (Zinc oxide)	130 mg/kg
		Se (Sodium selenite)	0.2 mg/kg

Ingredients: cereals (wheat, maize), meat and products of animal origin (dehydrated chicken, dehydrated pork), vegetable by-products (dried alfalfa, apple pomace, blackberries, pomegranate), fats and oils (pork fat), dried fruit mixture (cranberries, blackberries, pomegranate), milk thistle, Yucca Shidigera, minerals and vitamins.



LOGISTIC DATA			
PACKAGING	ORDER CODE	EAN CODE	IN A CARTON
500 g	405	8595045404002	10 pcs

DELIKAN *deLuxe*



High content of vitamin C

FOR GUINEA PIGS
SUPER PREMIUM FOOD



Complete super premium extruded feed for guinea pigs of all breeds in various developmental periods, which is enriched with essential vitamin C. In the processing of raw materials, a form of extrusion was used, which ensures better digestibility of feed while preserving all nutrients. The feed has the optimum hardness to grind the teeth of guinea pigs.

GUARANTEED ANALYSIS		NUTRITIONAL COMPOSITION	
Crude protein	13%	A Vitamin A (3a672a)	10.000 IU/kg
Crude fat	4%	D3 Vitamin D3 (3a671)	1.000 IU/kg
Inorganic substances (crude ash)	4.1%	E Vitamin E (3a700)	95 mg/kg
Crude fibre	6.5%	Fe (Ferrous sulphate monohydrate)	175 mg/kg
Calcium	0.68%	I (Potassium iodide)	0.5 mg/kg
Phosphorus	0.52%	Cu (Copper sulphate pentahydrate)	15 mg/kg
		Mn (Manganese oxide)	56 mg/kg
		Zn (Zinc oxide)	90 mg/kg
		Se (Sodium selenite)	0.2 mg/kg

Ingredients: cereals (wheat, corn), by-products of plant origin (dried alfalfa, sugar beet pulp, apple pomace), fats and oils (soybean oil), a mixture of dried fruits (cranberries, blackberries, pomegranate), milk thistle, Yucca Shidigera, minerals and vitamins.



LOGISTIC DATA			
PACKAGING	ORDER CODE	EAN CODE	IN A CARTON
500 g	393	8595045404019	10 pcs

DELIKAN *deLuxe*



With the addition of insect protein

FOR HAMSTERS
SUPER PREMIUM FOOD



Complete super premium extruded food for hamsters. We processed the raw materials contained in the feed in the form of extrusion for better digestibility of the feed while preserving all nutrients. The extruded granules have an optimal hardness suitable for grinding teeth in hamsters.

GUARANTEED ANALYSIS		NUTRITIONAL COMPOSITION	
Crude protein	16%	A Vitamin A (3a672a)	12.000 IU/kg
Crude fat	5%	D3 Vitamin D3 (3a671)	1.200 IU/kg
Inorganic substances (crude ash)	4.5%	E Vitamin E (3a700)	101 mg/kg
Crude fibre	7%	Fe (Ferrous sulphate monohydrate)	149 mg/kg
Calcium	0.61%	I (Potassium iodide)	0.6 mg/kg
Phosphorus	0.49%	Cu (Copper sulphate pentahydrate)	17 mg/kg
		Mn (Manganese oxide)	62 mg/kg
		Zn (Zinc oxide)	108 mg/kg
		Se (Sodium selenite)	0.2 mg/kg

Ingredients: cereals (wheat, corn) meat and products of animal origin (dehydrated chicken, dehydrated pork, insect protein), by-products of plant origin (dried alfalfa, apple pomace, sugar beet pulp), fats and oils (pork fat), mixture dried fruits (cranberries, blackberries, pomegranate), milk thistle, Yucca Shidigera, minerals and vitamins.



LOGISTIC DATA			
PACKAGING	ORDER CODE	EAN CODE	IN A CARTON
500 g	402	8595045404026	10 pcs

DELIKAN *deLuxe*



With the addition of hemp paste

FOR RABBITS
SUPER PREMIUM FOOD



Complete super premium extruded food for rabbits of all breeds with optimal hardness, which helps abrasive rabbit teeth. The feed contains all important components such as vegetable protein, fats and fiber, which is an indispensable source of nutrition for a happy rabbit life.

GUARANTEED ANALYSIS		NUTRITIONAL COMPOSITION	
Crude protein	15%	A Vitamin A (3a672a)	12.000 IU/kg
Crude fat	6%	D3 Vitamin D3 (3a671)	1.200 IU/kg
Inorganic substances (crude ash)	5.3%	E Vitamin E (3a700)	104 mg/kg
Crude fibre	14.1%	Fe (Ferrous sulphate monohydrate)	185 mg/kg
Calcium	0.66%	I (Potassium iodide)	0.5 mg/kg
Phosphorus	0.48%	Cu (Copper sulphate pentahydrate)	18 mg/kg
		Mn (Manganese oxide)	52 mg/kg
		Zn (Zinc oxide)	94 mg/kg
		Se (Sodium selenite)	0.2 mg/kg

Ingredients: cereals (wheat, maize), vegetable by-products (hemp granules, dried alfalfa, sugar beet pulp, apple pomace), fats and oils (soybean oil), carrots, a mixture of dried fruits (cranberries, blackberries, pomegranate), milk thistle, Yucca Shidigera, minerals and vitamins.



LOGISTIC DATA			
PACKAGING	ORDER CODE	EAN CODE	IN A CARTON
500 g	399	8595045404033	10 pcs

mixing line

fresh meat

quality white rice

extruder WENGER

drying oven BELT-O-MATIC

packaging machine VELTEKO

raw material stocks

storage facilities

DELIKAN



FOOD FOR DOGS AND CATS

FEEDING AND STORAGE INSTRUCTIONS

GRANULES:

The feed is given in a dry state, or poured over with lukewarm water or lukewarm broth. After pouring, we recommend serving for 10 minutes until the granules absorb the liquid. The dog must receive enough fresh water together with the feed.

Store the feed in a dry, cool (up to 18°C) and airy place, do not expose to direct sunlight.

CANS FOR DOGS AND CATS:

Feed according to the physical condition of the individual, taking into account the dosage table. Serve at room temperature, keep closed in a cool place after opening and use within 24 hours at the latest. Do not freeze. Ensure sufficient fresh drinking water when serving.

FEED FOR RODENTS:

FEED ACCORDING TO SIZE AND AGE OF HAMSTER, DAILY DOSE 30g.

FEED ACCORDING TO SIZE AND AGE OF RABBIT, DAILY DOSE 5-15g.

FEED ACCORDING TO SIZE AND AGE OF GUINEA PIG, DAILY DOSE 35-50g.

FEED ACCORDING TO SIZE AND AGE OF RAT, DAILY DOSE 15g.

THE ANIMAL MUST HAVE ENOUGH WATER FOR PERMANENT DRINKING.

STORE THE FEED IN A DRY, COOL (UP TO 18°C) AND AIRY PLACE AND SEE ATTENTION TO THE EXPIRY DATE PRINTED ON THE PACKAGING OF THE SELECTED FEED.

FOR MORE INFORMATIONS VISIT OUR WEBSITES

www.delikanpetfood.com or b2b.delikanpetfood.com

DELIKAN



FOOD FOR DOGS AND CATS

www.delikanpetfood.com

www.b2b.delikanpetfood.com